

WORTHINGTON CITY COUNCIL

AGENDA

7:00 P.M. - Monday, November 24, 2014

City Hall Council Chambers

A. CALL TO ORDER AND PLEDGE OF ALLEGIANCE

B. INTRODUCTIONS AND OPENING REMARKS

C. AGENDA ADDITIONS/CHANGES AND CLOSURE

1. Additions/Changes
2. Closure

D. CONSENT AGENDA

1. CITY COUNCIL MINUTES (WHITE)
 - a. City Council Minutes of Regular Meeting November 10, 2014
2. MINUTES OF BOARDS AND COMMISSIONS (PINK)
 - a. Heron Lake Watershed Minutes of September 16, 2014
 - b. Okabena-Ocheda-Bella Clean Water Partnership Joint Powers Board Minutes of September 13, 2014
 - c. Water and Light Commission Minutes of Regular Meeting November 17, 2014
3. a. CITY COUNCIL BUSINESS - ADMINISTRATION (WHITE)

Case Item

1. Application for Exemption from Lawful Gambling Permit - Worthington Area YMCA
 2. Additional 2015 Off-Sale/On-Sale Beer License Renewal Applications
4. FINANCIAL STATEMENTS (ORCHID)
 - a. Municipal Liquor Store Income Statement for the Period January 1, 2014 through October 31, 2014

5. **BILLS PAYABLE**

PLEASE NOTE: All utility expenditures are listed as 601,602,and 604, and are approved by the Water and Light Commission

E. CITY COUNCIL BUSINESS - ADMINISTRATION (WHITE)

Case Items

1. Recommendation from Ad Hoc Committee Regarding City Administrator Vacancy

F. CITY COUNCIL BUSINESS - PUBLIC WORKS (GREEN)

Case Items

1. 2015 Hangar Lease Rates - Worthington Municipal Airport

G. CITY COUNCIL BUSINESS - ENGINEERING (BLUE)

Case Items

1. Limited Use Permit for City Entrance Sign
2. Amend Operation and Maintenance Agreement with EMC

H. COUNCIL COMMITTEE REPORTS

1. Mayor Oberloh
2. Council Member Kuhle
3. Council Member Graber
4. Council Member Sankey
5. Council Member Wood
6. Council Member Nelson

I. CITY ADMINISTRATOR REPORT

J. ADJOURNMENT

**WORTHINGTON CITY COUNCIL
REGULAR MEETING, NOVEMBER 10, 2014**

The meeting was called to order at 7:00 p.m. in City Hall Council Chambers by Mayor Alan E. Oberloh with the following Council Members present: Mike Kuhle, Diane Graber, Rod Sankey, Ron Wood, Scott Nelson.

Staff present: Craig Clark, City Administrator; Steve Robinson, Public Works Director; Dwayne Haffield, Director of Engineering; Brad Chapulis, Director of Community/Economic Development; Janice Oberloh, City Clerk.

Others present: Erin Trester, Daily Globe; Aaron Hagen, Larry Janssen, DeTasha Place, Diana Madsen, Andy Johnson.

The Pledge of Allegiance was recited.

AGENDA APPROVED / CLOSED

The motion was made by Council Member Nelson, seconded by Council Member Wood and unanimously carried to approve / close the agenda.

CONSENT AGENDA APPROVED

The motion was made by Council Member Wood, seconded by Council Member Kuhle and unanimously carried to approve the consent agenda as follows:

- City Council Minutes - Special Meeting October 27, 2014; Regular Meeting October 27, 2014
- Board of Canvass Minutes of November 7, 2014
- Minutes of Boards and Commissions - Water and Light Commission Minutes of Regular Meeting November 3, 2014; Worthington Housing and Redevelopment Authority Board Minutes of September 24, 2014; Nobles Economic Development Network Minutes of September 18, 2014; Airport Advisory Board Minutes of November 4, 2014; Center for Active Living Committee Minutes of October 20, 2014
- 2015 On-Sale/Off-Sale Beer and Dance License renewals:
 - On-Sale
 - 2015 - 1 Pizza Hut #2747 - 1551 N. Humiston Avenue
 - 2015 - 2 El Azteca Restaurant - 223 Tenth Street
 - 2015 - 3 Hickory Lodge Bar & Grill LLC - 2015 N. Humiston Avenue
 - 2015 - 4 Fraternal Order of Eagles #3282 - 205 Oxford Street
 - 2015 - 5 The Ground Round Grill & Bar - P.O. Box 1029/1290 Ryan's Road
 - 2015 - 6 Worthington Country Club - 851 W. Oxford Street
 - 2015 - 7 BenLee's Bros. Café - 212 Tenth Street
 - 2015 - 8 Oxford Bowl - 325 Oxford Street
 - 2015 - 9 Panda House - 913 Fourth Avenue
 - 2015 - 10 Hy-Vee Market Café - 1235 Oxford Street

2015 - 11	El Mexicano #3 - 310 Tenth Street
<u>Off-Sale Beer</u>	
2015 - 1	Casey's General Store #3263 - 2021 Highway 59 N/Box 921
2015 - 2	Casey's General Store #1686 - 1704 Oxford Street
2015 - 3	Casey's General Store #2166 - 1007 Oxford Street
2015 - 4	Hy-Vee Food Store - 1235 Oxford Street
2015 - 5	Hy-Vee Gas - 1245 Oxford Street
2015 - 6	La Azteca Grocery Store - 219 Tenth Street
2015 - 7	Wal-Mart - 1055 Ryan's Road
2015 - 8	Worthington Comfort Suites - 1447 Prairie Drive
2015 - 9	El Mexicano #3 - 310 Tenth Street
2015 - 10	Fareway Store - 1028 Ryan's Road
2015 - 11	Interstate Cenex - 1710 N. Humiston Avenue
2015 - 12	Top Asian Food Store - 312 Tenth Street
2015 - 13	Worthington Travel Plaza - 2411 Highway 60 NE

Dance

- 2015-1 Hickory Lodge Bar & Grill - 2015 N. Humiston Avenue
- 2015-2 Fraternal Order of Eagles #3282 - 205 Oxford Street

- Bills payable and totaling \$686,944.04 be ordered paid

2015 LEGISLATIVE PRIORITIES APPROVED

Staff presented the City's proposed 2015 Legislative Priorities for approval, which included the following:

- Lewis and Clark Bonding Request
- Abatement Simplification
- Biotechnology Advancement Center Bonding Request
- Housing
- Public Safety ARMER
- Greater Minnesota Economic Development Initiatives
- Trail Development
- This Old House
- Completion of Highway 60 to St. James

The platform will be shared with the Governor and state legislators who represent Worthington and our area. The information will also be brought forward to the Nobles Economic Opportunity Network Committee.

The motion was made by Council Member Sankey, seconded by Council Member Wood and unanimously carried to approve the 2015 Legislative Priorities as presented.

REQUEST FROM STATE WIDE HEALTH IMPROVEMENT PROGRAM (SHIP)

**COMMITTEE APPROVED FOR CITY PARTICIPATION IN DEVELOPMENT OF
ACTIVE LIVING PROGRAM FOR WORTHINGTON**

DeTasha Place and Diana Madsen representing SHIP were present at the meeting to request Council approval of the City's participation in the development of an Active Living Plan for Worthington. The effort would be in coordination with the Southwest Regional Development Commission (SRDC) to develop a more walkable and bicycle friendly community through improvements outlined in a Full Impact Active Living Plan. The Plan development would be completed in three structured meetings and one email meeting, and have components that include public engagement, health demographics, existing conditions, SWOT analysis and Vision, Goals, and Strategic segments. The City's participation would be to assist in the formation of the active living steering committee, provide a listing of existing pedestrian infrastructure, and organize and host the three community meetings.

Development of the plan would be done through a \$6,000 grant from SHIP of Cottonwood, Jackson, and Nobles Counties at no direct cost to the City of Worthington, - the City would contract with the SRDC and be reimbursed by SHIP. Ms. Place and Ms. Madsen reviewed what their organization has done and is doing this year, and told Council the City would be required to have a plan in place in order to apply for funding for improvements.

The motion was made by Council Member Kuhle, seconded by Council Member Graber and unanimously carried to approve the City's participation in the development of a Community Active Living Plan and authorize the Mayor to sign and the Clerk to attest the contract with the SRDC for the creation of the plan.

**RESOLUTION NO. 3571 ADOPTED APPROVING CHANGES IN SEWER RATE
SCHEDULE**

Dwayne Haffield, Director of Engineering, presented the proposed 2015 Sewer Service Charges for Council consideration, noting the monthly sewer charge is comprised of two components - a usage charge and a connection charge. The usage charge is billed to non-industrial customers based on water consumption and assumed pollution levels. Mr. Haffield said we are looking at a 6.3% increase in the usage charge for non-industrial users, and a 3.4% increase in the connection charge. The Water and Light Commission minimized the increase through use of reserves, and approved the proposed charges at their November 3, 2014 meeting.

The motion was made by Council Member Wood, seconded by Council Member Graber and unanimously carried to adopt the following resolution approving the proposed 2015 Sewer Service Charges:

RESOLUTION NO. 3571

APPROVING CHANGES IN THE SEWER RATE SCHEDULE

(Refer to Resolution File for complete copy of Resolution)

RESOLUTION NO. 3572 ADOPTED DECLARING ADEQUACY OF PETITION AND ORDERING PREPARATION OF FEASIBILITY REPORT ON PROPOSED IMPROVEMENT

The City received a petition for improvement of C.S.A.H. 35 from C.S.A.H. 5 to 1400 feet east by extension of water main. The improvement is to provide water service to properties located on the north side of C.S.A.H. 35 that do not have access to municipal water. The petition was signed by owners of more than 35% of the property abutting the improvements and is, therefore, adequate for the project to be considered as initiated by petition. Staff presented a resolution for Council consideration declaring adequacy of petition and ordering a report on the proposed improvement.

The motion was made by Council Member Wood, seconded by Council Member Nelson and unanimously carried to adopt the following resolution:

RESOLUTION NO. 3572

DECLARING ADEQUACY OF PETITION AND ORDERING PREPARATION OF FEASIBILITY REPORT ON PROPOSED IMPROVEMENT

(Refer to Resolution File for complete copy of Resolution)

RESOLUTION ADOPTED AUTHORIZING EXECUTION OF MAINTENANCE AGREEMENT WITH MnDOT FOR SEGMENT OF TH 59/60

As presented in December of 2012 and 2013, old TH 59/60 from Flower Lane to its easterly connection with new TH 59/60 is proposed to be turned back to the City and County. However, the turn-back will not occur until after another winter maintenance season and the Minnesota Department of Transportation (MnDOT) was seeking to have the road segment maintained by a local road authority again this season. Prior to the season, MnDOT, County and City staff met and determined that it would be most efficient and effective for the City to undertake the maintenance of the subject segment. Staff presented a standard maintenance agreement between MnDOT and the City for the 2014-2015 winter season which outlines the City's responsibilities and provides for a payment of \$2,625 to the City for providing the required maintenance. The agreement terminates May 31, 2015.

The motion was made by Council Member Nelson, seconded by Council Member Wood and unanimously carried to adopt the following resolution authorizing the Mayor and Clerk to execute

the agreement:

CITY OF WORTHINGTON RESOLUTION

IT IS RESOLVED that the City of Worthington enters into MnDOT Agreement No. 07024 with the State of Minnesota Department of Transportation for the following purposes:

To provide for routine maintenance by the City, upon, along and adjacent to Old Trunk Highway No. 60, the limits of which are defined in said Agreement.

IT IS FURTHER RESOLVED that the Mayor and Clerk are authorized to execute the Agreement and any amendments to the Agreement.

RESOLUTION ADOPTED SETTING REQUIRED STREET LIGHTING SYSTEM REVENUE AND SPECIAL SERVICE CHARGE BASE RATE

In August of 2010, Council adopted Ordinance No. 1034 establishing special charges for operation of a street light system, and which provides for the Required Street Lighting System Revenue and Special Service Charge Base Rate to be adopted by resolution. The 2015 Street Light Fund budget approved by Council at its special meeting October 27, 2014 included operation and maintenance expenses of \$269,217, and no other revenue dedicated to fund the street light system. Based on the adopted budget and the service charge rate structure established in the 2010 ordinance, the base service charge rate is calculated to be \$54.72. The monthly residential charge will be \$4.56, with all other non-exempt properties being billed at \$13.68 per month. Dwayne Haffield, Director of Engineering, told Council this will be the first increase since the special service charge was adopted.

The motion was made by Council Member Wood, seconded by Council Member Kuhle and unanimously carried to adopt the following resolution establishing the Required Street Lighting System Revenue and Special Service Charge Base Rate, effective with the January 2015 billing:

RESOLUTION

SETTING REQUIRED STREET LIGHTING SYSTEM REVENUE AND SPECIAL SERVICE CHARGE BASE RATE

WHEREAS, City Ordinance Number 1034 provides that the Required Street Lighting System Revenue and resulting Special Service Charge Base Rate shall be adopted by resolution; and

WHEREAS, the annual expenditures by the City of Worthington for the

establishment, operation, construction, repair, replacement, maintenance, enlargement and improvement of the Street Lighting System is projected to be \$269,217; and

WHEREAS, no other source of revenue will be applied to fund the Street Lighting System; and

WHEREAS, the City Engineer has calculated that the Special Service Charge Base Rate required to fund the annual expenditures of the Street Lighting System is \$54.72.

NOW THEREFORE, BE IT RESOLVED BY THE CITY COUNCIL OF THE CITY OF WORTHINGTON, MINNESOTA:

1. That the Required Street Lighting System Revenue is declared to be \$269,217.
2. That the Special Service Charge Base Rate shall be \$54.72.
3. That the Special Service Charge Base Rate is to be effective with the January 2015 billing period.

APPOINTMENT OF OXFORD STREET REDEVELOPMENT PLAN STEERING COMMITTEE APPROVED

Brad Chapulis, Director of Community/Economic Development, presented a list of 12 candidates who were agreeable to serve on the Oxford Street Redevelopment Plan Steering Committee. The Committee will have an important role creating the plan and developing its support. They will steer the project and ultimately recommend the Plan to the Planning Commission and City Council. The Committee will be ad-hoc and will dissolve once the project is complete. The following names were suggested for the Committee:

Rod Sankey - Council Representative
Amber Luinenberg - Chamber Representative
Jason Vote - WREDC Representative
Chad Nixon - Planning Commission Representative
Royce Boehrs
Jayme Boots
Brenda Hurlburt
Josh Miller
Steve Johnson
Lizbeth Lerma
Jeff Luke

Carol Lee Anderson

The motion was made by Council Member Wood and seconded by Council Member Kuhle to approve the list for the Committee as presented.

Mayor Oberloh inquired if it wasn't the intent to have two Council Members on this Committee. Mr. Chapulis said the only action previously taken included just one, but if Council desired they could appoint another.

Following a brief discussion, Council Member Wood amended his motion to include Larry Janssen, Council Member Elect, to the list of names for the Oxford Street Redevelopment Plan Steering Committee. Council Member Kuhle accepted the amendment, the motion was unanimously carried.

COUNCIL COMMITTEE REPORTS

Mayor Oberloh - No reports but wanted say thanks to all the Vets and their families for their service.

Council Member Kuhle - Nothing to report.

Council Member Graber - CAL membership is at 200 - they're waiting for the City to approve a SMOC worker to help out, with the funding to come from SMOC. Kris is working on a DHS grant and developing collaborative relationships for active living. Pickle Ball, with continued growth, seems to be their most popular program. She and Mike Woll got together and submitted choices for consideration for the regional trail plan as requested by the chair person of that committee. Attended to the Purnet ground breaking event.

Council Member Sankey - There will be no change in the hangar rent rates for 2015. Some of the bi-fold doors are becoming a safety issue. The Taxiway B repair project is completed. The rotary mower is showing some wear and tear. They are looking for a member for the Airport Advisory Board.

Council Member Wood - Water and Light budgets should be coming forward.

Council Member Nelson - The HRA 48 unit housing project - they are starting to place the buildings on the foundations. The CVB will be having a half day planning session next Wednesday.

CITY ADMINISTRATOR'S REPORT

Craig Clark, City Administrator, noted this would be his last Council meeting and thanked his family for their support in this position, and thanked Council past and present and staff, and the community for their well wishes. He is very grateful for the opportunities he had here. Mayor Oberloh wished Mr. Clark the best of luck with his new job. Mr. Clark mentioned the Oxford Street Redevelopment and hoped that Council continues to push forward with the project, and that in some of the harder decisions - when people are standing before us - to remember the broader public interest. Additional land for industrial development will be critical for the community.

Worthington City Council
Regular Meeting, November 10, 2014
Page 8

ADJOURNMENT

The motion was made by Council Member Nelson, seconded by Council Member Graber and unanimously carried to adjourn the meeting at 7:35 p.m.

Janice Oberloh, MCMC
City Clerk

UNAPPROVED

WATER AND LIGHT COMMISSION MINUTES REGULAR MEETING NOVEMBER 17, 2014

The regular meeting of the Water and Light Commission was called to order in the Worthington Public Utilities Conference Room at 3:00 P.M., CST, by President Randy Thompson with the following members present: Gary Hoffmann, James Elsing and Aaron Hagen. Absent was Ron Wood (excused).

Staff members present were Scott Hain, General Manager; Deb Scheidt, Secretary to the Commission

Others present: Erin Trester, Daily Globe

AGENDA ADDITIONS/CLOSURE

Scott Hain, General Manager, requested the addition of *City Entrance Signs* to the agenda. A motion was made by Commissioner Hoffmann, seconded by Commissioner Elsing and unanimously carried to close the agenda with the addition of *City Entrance Signs*.

CONSENT AGENDA APPROVED

A motion was made by Commissioner Hagen, seconded by Commissioner Hoffmann and unanimously carried to approve the consent agenda as follows:

- Quarterly Haloacetic Acids (HAA5) and Trihalomethane (THM) Results
- Water and Light Commission minutes of the regular meeting held on November 3, 2014
- Financial statements and staff reports for October 2014
- Utility bills payable totaling \$177,590.84 for November 7 and November 14, 2014

LEWIS AND CLARK REGIONAL WATER SYSTEM JOINT POWERS BOARD

A motion was made by Commissioner Hoffmann, seconded by Commissioner Hagen and unanimously carried to re-appoint Commissioner Elsing as representative and to appoint Commissioner Hagen as alternate representative on the Lewis and Clark Minnesota Systems Joint Powers Board beginning January 1, 2015, through December 31, 2016.

COMMENT LETTER TO THE U.S. ENVIRONMENTAL PROTECTION AGENCY (EPA)

Scott Hain, General Manager, presented the Commission with information from Missouri River Energy Services (MRES) on the Environmental Protection Agency's Clean Power Plan proposal under section 111(d) of the Clean Air Act and briefly discussed the potential impacts the proposal would have on Missouri River Energy Services. The information included a sample letter to be used by MRES members to submit comments to the EPA on their aggressive plans to

reduce carbon emissions in the United States. The deadline for the submittal of comments is December 1, 2014.

A motion was made by Commissioner Hoffmann, seconded by Commissioner Hagen and unanimously carried to authorize the submittal of a comment letter based on the MRES sample, to be signed by President Thompson and submitted by the December 1, 2014, deadline for comments.

CITY ENTRANCE SIGNS

Scott Hain, General Manager, reminded Commission members that at their October 7, 2013, regular meeting, the Commission formally committed to Worthington Public Utilities (WPU) providing solar lighting for the proposed new “Welcome to Worthington” entrance signs. At that time, WPU agreed to cover the costs for labor and material to provide solar power to light the signs. WPU had also received a proposal from Backup Power Source, Inc. for the solar lighting. The material cost for three signs was \$2,431 per sign (installation not included). Mr. Hain reported that the price for three signs has now increased to \$2,990 per sign (installation not included) and asked if the Commission was still committed to participating in the project despite the increased cost per sign.

A motion was made by Commissioner Elsing, seconded by Commissioner Hoffmann and unanimously carried to continue with their commitment to the project and approved the increased cost from \$2,431 to \$2,990 per sign for three signs (installation not included).

NAME VOTING DELEGATES TO THE NOBLES ECONOMIC OPPORTUNITY NETWORK (NEON)

Scott Hain, General Manager, reported that the Nobles Economic Opportunity Network (NEON) was recently formed. NEON is an entity created for the purpose of fostering increased collaboration between various governmental agencies including townships and cities within Nobles County. Worthington Public Utilities (WPU), as a “water authority serving Nobles County”, is also considered a member of the group.

NEON has requested that each member submit up to two names as delegates that are authorized to represent their respective member should business be conducted that would require a member vote. Mr. Hain requested that the Commission consider naming a delegate and an alternate delegate to represent WPU within NEON. The group will generally hold regular monthly meetings.

A motion was made by Commissioner Elsing, seconded by Commissioner Hoffmann and unanimously carried to appoint Commissioner Hoffman as the delegate and Commissioner Hagen as the alternate delegate to represent WPU within the NEON group.

Utility staff will provide Nobles County Administration with the names of all Water and Light Commission members and their WPU e-mail addresses so they can receive future correspondence from NEON, including agendas and minutes.

2015 ELECTRIC DEPARTMENT BUDGET

Scott Hain, General Manager, reminded Commission members that the results of a 2013 Missouri River Energy Services (MRES) rate study recommended increases to the 2014 electric retail rates which were attributable to rising purchased power and transmission costs. At that time, MRES did not predict a rate increase for 2015 so the Commission directed Mr. Hain to include the first half of the recommended rate increase in 2014 and the second half in 2015. Mr. Hain reported that MRES now predicts an estimated \$1.5 million increase in purchased power and transmission costs for 2015. No increase in the 2014 or 2015 rates is attributable to locally controlled costs.

Mr. Hain reported that he is in the process of developing the proposed 2015 Electric Department Strategic Financial Plan. As a result of the unexpected need for a significant electric retail rate adjustment in 2015, he presented three options to the Commission to assist them in providing him with some direction in completing the proposed budget. All three options included the effects of the rate adjustment on typical bills and operating flow of funds for 2015 through 2019.

The first option, using the implementation of the second half of the recommended 2014 rate adjustment only, resulted in a significant decrease in the cash balance for 2015 through 2019. The second option, using the second half of the recommended 2014 adjustment plus a 5% increase in rates, resulted in a less significant decrease in the cash balance for 2015 through 2017 and an increase in the cash balance for 2018 and 2019. The third option, using the cost of service plus a 2% increase in rates, resulted in a less significant decrease in the cash balance for 2015 through 2019.

After considering the options presented, the Commission directed Mr. Hain to proceed with the second option which included the implementation of the second half of the recommended 2014 retail rate adjustment plus a 5% increase in rates in order to accommodate the expenses included in the budget. The proposed 2015 Electric Department Strategic Financial Plan will be presented to the Commission for consideration at their December 1, 2014, regular meeting.

ADJOURNMENT

President Thompson declared the meeting adjourned at 4:33 p.m.

Deb A. Scheidt
Secretary to the Commission

**OKABENA-OKHEDA-BELLA CLEAN WATER PARTNERSHIP
JOINT POWERS BOARD**

**Meeting Minutes
September 13, 2013**

The meeting was convened at 7:30 a.m. in the Council Chambers.

Members Attending: Diane Graber, Steve Johnson, Les Johnson, Rolf Mahlberg.

Others Present: Craig Clark, Dwayne Haffield, Dan Livdahl, Julie Buntjer.

Mahlberg moved to approve the minutes of the November 2012 meeting. The motion was seconded by Steve Johnson and unanimously carried.

The financial report was reviewed. There is approximately \$464,970 in the City's CWP account. The expected costs of liability insurance, filter strips incentives and Lake Okabena water quality monitoring were discussed. Mahlberg moved to approve payment of the pending insurance, filter strip and water monitoring bills after review by city and district staff. The motion was seconded by Graber and unanimously carried.

A proposal from Wenck Engineering to collect information on Lake Okabena and its watershed to improve the Minnesota Pollution Control Agency's TMDL study for the Missouri River basin was presented to the board. Completion of tasks in the proposal would cost \$53,558. MPCA is willing to contract with Wenck for tasks totaling \$23,366. Steve Johnson moved to recommend that the City Council approve spending up to \$26,000 from the CWP/Lake Improvement Reserve account and that the watershed district provides \$4400 in labor to complete the tasks in the proposal. The motion was seconded by Mahlberg and unanimously carried.

The cost of surveying Lake Okabena and Sunset Bay to assess sedimentation rates would be about \$2500. Mahlberg moved to endorse surveying the lake bottom and add the cost to the 2014 CWP budget. The motion was seconded by Steve Johnson and unanimously carried.

The Olson Trust paid to survey Okabena Creek between Industrial Lane and the Whiskey Ditch floodwater control project. Due to the steepness of the streambanks, the geometry of the stream meanders, location of the Industrial Park stormwater pond and other factors, the site isn't conducive to using bioengineering or other environmentally friendly methods to solve the erosion problem. Lining the stream bottom and banks with riprap would cost approximately \$700,000. It is likely that riprap would need to be installed in stages due to the cost.

Meeting adjourned.

Heron Lake Watershed District
Regular Meeting
September 16, 2014

1. Call to Order

Mike McCarvel called the meeting to order at 7:00 p.m.

Managers present: Gary Ewert, Mike McCarvel, Jim Buschena, Dale Bartosh, and Roger Hartman

Staff: Amanda Schultz, Catherine Sereg, and Jan Voit

Others: Diane Graber, City of Worthington; Wayne Drealan, Drealan, Kvilhaug, Hoefker, and Co.; Dave Henkels, Jackson County; Mike Tow, Tow Law Firm; Jerry Christopherson, Huddy Thompson, Kris Sullivan, Mike LaMaack, LeRoy Peterson, and Paul Hovland

2. Agenda

Gary Ewert made a motion to approve the agenda. Dale Bartosh seconded this. Motion carried unanimously.

3. 2013 Audit

Wayne Drealan presented the 2013 financial statement, which included an explanation of the income, expenditures, and deficiencies. Discussion was held regarding Minnesota's unclaimed property system. The vendors will be contacted again and checks reissued. Discussion was also held regarding the out-of-state travel policy for elected officials.

Gary Ewert made a motion to approve the 2013 audit report. Dale Bartosh seconded this. Motion carried unanimously.

4. Minutes

Jim Buschena made a motion to approve the minutes of the August 19, 2014 budget hearing and August 19, 2014 regular meeting. Mike McCarvel seconded this. Motion carried unanimously.

5. Treasurer's Report

Jan Voit presented the treasurer's report and bills payable. Jim Buschena made a motion to approve the treasurer's report. Gary Ewert seconded this. Motion carried unanimously.

6. Clean Water Partnership (CWP) Loan Program Extension

Jan Voit explained that a one-year extension of the loan program will provide the best opportunity to use the funds for septic system replacements and conservation tillage equipment. Dale Bartosh made the following motion.

BE IT RESOLVED by the Board of Managers of the Heron Lake Watershed District (HLWD) that, as Loan Sponsor and Project Sponsor, on May 15, 2012, the Board passed a Resolution to enter into the Minnesota CWP Project Implementation Loan Agreement along with the Minnesota Pollution Control Agency (MPCA) to conduct the Heron Lake Phosphorus Reduction Project.

BE IT FURTHER RESOLVED by the Board of Managers of the HLWD that District Administrator, Jan Voit was authorized on May 15, 2012, by resolution of the Board, to serve as Project Representative and represent the Board in all matters which, according to

the conditions of the Minnesota CWP Project Implementation Loan Agreement, do not specifically require action by the Board.

BE IT FURTHER RESOLVED by the Board of Managers of the HLWD that District Administrator, Jan Voit was authorized on May 15, 2012, by resolution to execute loan disbursement requests for the above referenced project to the MPCA on behalf of the Board.

BE IT FURTHER RESOLVED by the Board of Managers of the HLWD that the District Administrator, Jan Voit, be authorized to execute the Minnesota CWP Project Implementation Loan Agreement amendment for the above referenced Project on behalf of the Board, as Project and Loan Sponsor. This is retroactive to and amends the previous Resolution dated May 15, 2012, with respect to the SRF0257 CWP Project Implementation Loan Agreement.

WHEREUPON the above resolution was adopted at regular meeting of the Board of Managers of the HLWD this 16th day of September, 2014.

Roger Hartman seconded this. Discussion was held regarding loan amounts. Landowners can borrow 100 percent up to \$15,000 to replace a septic system. Conservation tillage loans can be a maximum of \$30,000. The original amount of the loan was \$450,000. To date, 10 loans have been issued for septic systems in the amount of \$114,525.25. Motion carried unanimously.

7. Digital Elevation Model (DEM) Terrain Analysis

Jan Voit explained the opportunity to participate in the Southwest Prairie Technical Service Area Clean Water Fund (CWF) grant for the DEM Terrain Analysis. The terrain analysis will accurately reflect water flow across the landscape at the field scale. Dale Bartosh made a motion to allocate up to \$2,300 toward the DEM Terrain Analysis contingent on all partners participating equally. Jim Buschena seconded this. Motion carried unanimously.

8. CWF Grant Application

Jan Voit explained CWF grant application. The project will help to enhance our position for future implementation funding by providing the specific data needed to show suitability for best management practices placement and the outcome of targeted implementation for water quality improvement. Jim Buschena made the following motion: the HLWD commits \$16,250 to the Board of Water and Soil Resources (BWSR) Fiscal Year (FY) 15 CWF Request for Proposals (RFP). The District Administrator has authority to submit a grant application for the BWSR FY15 CWF RFP on behalf of the HLWD. If a grant is awarded, the District Administrator also has authority to sign and enter into the grant agreement on behalf of the HLWD. Roger Hartman seconded this. Motion carried unanimously.

9. Conservation Partners Legacy (CPL) Grant Application

Catherine Sereg and Jan Voit explained the CPL grant application. The sediment in the wetland restoration on the Dierks property would be removed, the upland would be burned, and then seeded to native vegetation. Jim Buschena made a motion to commit \$5,100 in-kind match to the HLWD Prairie Enhancement project through the CPL grant program, to authorize the District Administrator to submit the application on behalf of the HLWD, and to authorize the District Administrator to sign and enter into the grant

agreement on behalf of the HLWD if the grant is awarded. Gary Ewert seconded this. Motion carried unanimously.

10. Communication Workshops Dates

Mike McCarvel explained the intent of the communication workshops – bringing in a consultant to assist the board and staff with communication problems in a process meant to develop a way to relate to each other in a negotiable way. Discussion was held regarding the open meeting law. Mike Tow explained that if the workshops are open or closed depends totally upon what the training involves. He does not have enough information to make that determination. Individual sessions would not fall under the open meeting law. Courts are very conservative on this issue and want entities to err on the side of being open rather than closed.

Jan Voit contacted the consultant regarding dates for the Communication Workshops. The board chose December 16 and December 17, with the board meeting to follow the workshop on December 17. Jan will contact the consultant and seek further information regarding the agenda and information to be presented. The information gathered will be provided to the managers and legal counsel.

11. Reports

District Administrator

Jan Voit reported on the levy certification, Freemire property, Aquatic-Upland Prairie Restoration, Representative Hamilton request, Jackson County Judicial Ditch (JD) #31, Heron Lake Sediment Reduction Demonstration Project Final Report, Jackson County JD #3, West Fork Des Moines River (WFDMR) Total Maximum Daily Load (TMDL) Project amendment meeting, DEM RFP and CWF application, CWP Loan Program, Major Watershed Project (MWP), financial information, CPL grant application, and the website.

Gary Ewert made a motion to approve the Bullerman and Brewington septic system loans contingent upon providing all the necessary paperwork. Jim Buschena seconded this. Motion carried unanimously.

Watershed Technician

Catherine Sereg provided information on the water sampling, project implemented through the Legislative-Citizen Commission on Minnesota Resources (LCCMR) grant, CWF and CPL grant applications, and pending projects.

Watershed Coordinator

Amanda Schultz gave an update on DEM webinar, CWF webinar, water sampling, MWP, and WFDMR TMDL Implementation Project amendment meeting.

12. Adjournment

The meeting adjourned at 8:12 p.m.

Dale Bartosh
Secretary

CITY OF WORTHINGTON, MINNESOTA

MUNICIPAL LIQUOR STORE
INCOME STATEMENT
For the Period 1/1/14 Through 10/31/14
(Amounts in Dollars)

	Total 2014 Budget	OCTOBER		% YTD Actual to Budget	YTD	
		Actual	Previous Year		Actual	Previous Year
Sales						
Liquor	1,400,000	111,853	96,939	76.1%	1,066,018	1,012,447
Wine	460,000	35,723	32,372	70.4%	323,868	310,062
Beer	1,620,000	124,309	109,159	80.5%	1,303,425	1,236,216
Mix/nonalcohol	64,000	4,112	3,498	78.1%	49,988	55,266
NSF charges	300	-	-	20.0%	60	62
Net Sales	3,544,300	275,997	241,968	77.4%	2,743,359	2,614,053
Cost of Goods Sold						
Liquor	1,008,000	80,558	65,101	76.2%	767,746	734,598
Wine	324,000	25,971	28,890	70.4%	228,156	226,284
Beer	1,234,000	97,835	81,677	80.6%	994,835	928,660
Soft drinks/mix	41,500	2,723	2,390	86.5%	35,888	30,955
Freight	24,000	2,696	2,360	87.9%	21,098	19,240
Total Cost of Goods Sold	2,631,500	209,783	180,418	77.8%	2,047,723	1,939,737
Gross Profit	912,800	66,214	61,550	76.2%	695,636	674,316
Operating Expenses						
Personnel services	252,211	19,130	19,614	80.8%	203,897	203,376
Supplies	19,200	1,003	555	97.8%	18,770	13,006
Other services & charges	138,011	9,220	7,568	78.4%	108,199	94,473
Depreciation (estimated)	15,500	1,292	1,417	83.4%	12,920	14,170
Total Operating Expenses	424,922	30,645	29,154	80.9%	343,786	325,025
Operating Income (Loss)	487,878	35,569	32,396	72.1%	351,850	349,291
Non-Operating Revenues (Expenses)						
Interest earnings **	3,000	250	250	146.6%	4,397	2,575
Other non-operating	-	-	-	-	-	1,381
Total Non-Operating Revenue (Expense)	3,000	250	250	146.6%	4,397	3,956
Net Income (Loss) b/Operating Transfers	490,878	35,819	32,646	72.6%	356,247	353,247
Operating Transfers-Out	(225,000)	(18,750)	(16,667)	83.3%	(187,500)	(166,670)
Net Income (Loss)	265,878	17,069	15,979	N/A	168,747	186,577

** Includes 6/30/14 actual and four months budget

ADMINISTRATIVE SERVICES MEMO

DATE: NOVEMBER 24, 2014

TO: HONORABLE MAYOR AND CITY COUNCIL

SUBJECT: ITEMS REQUIRING CITY COUNCIL ACTION OR REVIEW

CONSENT AGENDA CASE ITEMS

1. APPLICATION FOR EXEMPTION FROM LAWFUL GAMBLING - YMCA

A Minnesota Lawful Gambling LG220 Application for Exempt Permit has been received from the Worthington Area YMCA for their annual fund raising event as follows:

Organization:	Worthington Area YMCA
CEO:	Andrew P. Johnson
Type of Event:	Raffles
Date and Location of Event:	April 11, 2015 Worthington Event Center 1447 Prairie Drive, Worthington, MN

The application must be approved by the local government entity prior to being forwarded to the State of Minnesota for their approval.

Council action is requested to approve the Application for Exemption from Lawful Gambling Permit for the Worthington Area YMCA.

2. ADDITIONAL 2015 LICENSE RENEWAL APPLICATIONS

The following additional 2015 License Renewal Applications have been received:

Off-Sale Beer

2015-14 Food n Fuel, 907 Diagonal Road

Dance

2015-3 VFW, Post 3958, 1117 Second Avenue

All the required paperwork, insurance certificates, and fees have been received.

Council action is requested to approve the additional 2015 license renewal applications as

presented.

CASE ITEMS

1. **RECOMMENDATION FROM AD HOC COMMITTEE REGARDING CITY ADMINISTRATOR VACANCY**

At the October 27, 2014 meeting, the Council established an ad hoc committee which was charged with the development of a list of potential candidates to serve as Interim Administrator until such time that the position could be filled by a full-time administrator. The Committee was asked to forward its recommendations to the full City Council for consideration. Council Members Graber and Nelson, along with Mayor Oberloh, were selected to sit on the committee. City Attorney Mark Shepherd was also asked for his input and guidance. The Committee met several times and discussed various candidates keeping in mind the need to ensure that current projects and issues continue to move forward. In addition, consideration was given to past practice by the City Council in dealing with vacancies in the Administrator's office. Past practice has been for the Council to appoint an Acting or Interim City Administrator from either within or outside of City Hall. In either case, much of the actual workload has been spread amongst the various department heads.

Given the long-time tenure of most of the City department heads, the Interim Committee recommends that, in lieu of appointing a single individual to serve as Acting or Interim City Administrator, the seven department heads (Janice Oberloh, Dwayne Haffield, Scott Hain, Brian Kolander, Brad Chapulis, Steve Robinson, and Troy Appel) share the workload amongst themselves until such time as a permanent City Administrator is hired.

Council is asked to either approve the recommendation of the Committee or to find a different solution to address the vacancy in the City Administrator position.

PUBLIC WORKS MEMO

DATE: NOVEMBER 19, 2014

TO: HONORABLE MAYOR AND CITY COUNCIL

SUBJECT: ITEM REQUIRING CITY COUNCIL ACTION OR REVIEW

CASE ITEM

1. 2015 HANGAR LEASE RATES – WORTHINGTON MUNICIPAL AIRPORT

At the November 4, 2014 Worthington Municipal Airport Advisory Board meeting, the Board recommended no adjustments to the hangar lease rates for 2015.

Nineteen of the twenty-two available hangars are currently rented for an 86% occupancy. Full occupancy would result in an annual revenue of \$30,569.00.

Attached is a list of the hangars and the proposed annual lease amount.

Staff is requesting approval from the Council for 2015 hangar lease rates.

Proposed 2015 Hangar Lease Rates

Hangar	Tenant	Amount
1-1	Cameron Johnson	\$500.00
1-2	Verlus Burkhart	\$500.00
1-3	Chuck Fienhage	\$500.00
1-4	Gary Ewert	\$500.00
1-5	Germain Elsing	\$500.00
1-6	Vacant	\$500.00
2-1	Richard Cross	\$1,020.00
2-2	Wayne Sieverding	1,020.00
2-3	Vacant	\$1,020.00
2-4	Brian Dorcey	\$1,020.00
2-5	Evan Koep	\$1,020.00
2-6	Jim Malters	\$1,020.00
3-1	Jim Arnt	\$1,380.00
3-2	Vacant	\$1,380.00
3-3	CAP	Free
3-4	Keith Wilson	\$1,380.00
3-5	Carl Hallum	\$1,380.00
3-6	Richard Cross	\$1,380.00
5-1	Jim Arnt	\$8,549.88
5-2	Steve Jackson	\$2,000.00
5-3	Marc Freese	\$2,000.00
5-4	Brian Larson	\$2,000.00

Total revenue collected with full occupancy: \$30,569.00

ENGINEERING MEMO

DATE: NOVEMBER 20, 2014
TO: HONORABLE MAYOR AND COUNCIL
SUBJECT: ITEMS REQUIRING COUNCIL ACTION OR REVIEW

CASE ITEMS

1. LIMITED USE PERMIT FOR CITY ENTRANCE SIGN

As Council is aware, the new city entrance signs will be constructed along TH 60 northeast of town, TH 59 north of Airport Road and TH 59/60 southwest of CSAH 10. The signs on TH 59 and TH 60 will be constructed along but outside highway right-of-way. Only a permit for temporary construction access is required from the Minnesota Department of Transportation (MnDOT) for installation for these signs. The sign on TH 59/60 southwest of town is to be constructed within highway right-of-way. Minnesota statute allows for installation of community identification signs within highway right-of-ways with written approval from MnDOT. MnDOT provides such approval through the issuance of a Limited Use Permit.

Exhibit 1 is the proposed Limited Use Permit for the sign to be constructed on TH 59/60. The permit includes certain conditions including that the sign must be installed and maintained by the City, the permit will terminate by the end of 2023 and must be reapplied for 90 days in advance, and the permit may be terminated by MnDOT with 90 day notice. The sign must be removed by the City if the permit is terminated.

Staff recommends that Council Authorize the Mayor and Clerk to execute the Limited Use Permit by passing the resolution also included in Exhibit 1.

Due to the abrupt change in weather it is likely that installation of the signs will not be undertaken until next spring.

2. AMEND OPERATION AND MAINTENANCE AGREEMENT WITH EMC

EMC provides contract operation and maintenance services at the Industrial Wastewater Treatment Facility which treats wastewater from the JBS facility. At its July 28, 2014 meeting, the City Council approved an updated Operations & Maintenance Agreement with EMC which extended the contract to the end of 2018. The contract requires that EMC provide minor chemicals (major chemicals are purchased directly by the City) and the routine sampling required in the facility's discharge permit. The contract is to be amended when discharge limits, processes or loadings impact the cost of operating the facility.

The treatment facility's latest discharge permit required that the facility meet a residual chlorine limit starting in April of 2014. Meeting the limit requires further treatment by chemical addition and discharge sampling to verify compliance. It was agreed to operate through one chlorination (disinfection) season before projecting the additional cost for meeting the new discharge limitation. Based on this year's chlorination season the additional cost is projected to be \$2,448/year or \$204/month. Exhibit 2 is the proposed First Amendment to the operations and maintenance agreement. The amendment increases the monthly compensation to EMC by \$204 and is retroactive to the first of this year. The monthly compensation is subject to automatic annual adjustments per the existing agreement. Staff recommends that Council authorize execution of the First Amendment to the EMC operations and maintenance agreement.

All costs for operation of the Industrial Wastewater Treatment Facility, less revenues received for treatment of Worthington Rendering and trucked in wastewater, is paid by JBS. JBS is aware of the proposed amendment and the amount of the adjustment in compensation.

**STATE OF MINNESOTA
DEPARTMENT OF TRANSPORTATION**

LIMITED USE PERMIT

C.S. 5305 (T.H. 60)
County of Nobles
LUP # 5304-0005
Permittee: City of Worthington
Terminates: 12/11/2023

In accordance with Minnesota Statutes Section 161.434, the State of Minnesota, through its Commissioner of Transportation, MnDOT, hereby grants a Limited Use Permit to City of Worthington, Permittee, to use the area within the right of way of Trunk Highway No. 60 as shown in red on Exhibit "A", (the Area) attached hereto and incorporated herein by reference. This permit is executed by the Permittee pursuant to resolution, a certified copy of which is attached hereto and incorporated herein.

Municipal ID Entrance Sign

The Permittee's use of the Area is limited to only the constructing and maintaining a Municipal Identification Entrance Sign (the Facility) and the use thereof may be further limited by Minnesota Statutes Section 173.02 Subdivision 6(a) and Section 173.025. The Permittee will be allowed access from said trunk highway for the purpose of constructing and maintaining the sign. When working on the Area, the Permittee will conduct its operations in accordance with the requirements of the "Minnesota Field manual on Temporary Traffic Control Zone Layouts". No advertising of any nature is permitted on the Sign except that the Permittee may incorporate a short promotional slogan which has historically been used in the identification of the Permittee.

In addition, the following special provisions shall apply:

SPECIAL PROVISIONS

1. **TERM.** This permit will terminate at 11:59PM on 12/11/2023. This permit will not be renewed. This permit is also subject to cancellation and termination by the Minnesota Department of Transportation, with or without cause, by giving the Permittee 90 days written notice of such intent. Prior to termination, or within 90 days of the cancellation notice, the Facility shall be removed by the Permittee. The Permittee is required to return and restore the area to a condition satisfactory to the Minnesota Department of Transportation District Engineer. The removal of the Facility and the return and restoration of the Area shall be at no cost to the Minnesota Department of Transportation and at the sole expense of the Permittee. If Permittee

desires to continue its use of the Area, the Permittee must reapply to the Minnesota Department of Transportation, at least 90 days prior to termination, for a new limited use permit.

After termination, any continued occupancy or use, under this permit, of the Area is not authorized. However, if such continued occupancy or use occurs, all provisions of this permit related to Permittee's liability or responsibility remain in effect. Permittee will pay MnDOT all costs and expenses, including attorney's fees, in any successful action brought by State of Minnesota to remove the facility and stop the continued occupancy or use.

2. **CONSTRUCTION.** The construction, maintenance, and supervision of the Facility shall be at no cost or expense to MnDOT.

Before construction of any kind, the plans for such construction shall be approved in writing by the Minnesota Department of Transportation, through the District Engineer. Approval from Minnesota Department of Transportation District Engineer shall be required for any changes from the approved plan.

The Permittee shall construct the Facility at the location shown in the attached Exhibit "A" subject to verification by the Minnesota Department of Transportation District Engineer that the construction geometrics and procedures result in a Facility that is compatible with the safe and efficient operation of the highway.

Upon completion of the construction of the Facility, the Permittee shall restore all disturbed slopes and ditches in such manner that drainage, erosion control and aesthetics are perpetuated.

The Permittee shall preserve and protect all utilities located on the lands covered by this permit at no expense to MnDOT and it shall be the responsibility of the Permittee to call the Gopher State One Call System at 1-800-252-1166 at least 48 hours prior to performing any excavation.

Any crossings of the Facility over the trunk highway shall be perpendicular to the centerline of the highway and shall provide and ensure reasonable and adequate stopping sight distance.

3. **MAINTENANCE.** Any and all maintenance of the Facility shall be provided by the Permittee at its sole cost and expense, including, but not limited to, plowing and removal of snow and installation and removal of regulatory signs. No signs shall be placed on any MnDOT or other governmental agency sign post within the Area. MnDOT will not mark obstacles for users on trunk highway right of way.
4. **USE.** Other than as identified and approved by MnDOT, no permanent structures or no advertising devices in any manner, form or size shall be allowed on the Area. No commercial activities shall be allowed to operate upon the Area.

Any use permitted by this permit shall remain subordinate to the right of the Minnesota Department of Transportation to use the property for highway and transportation purposes. This permit does not grant any interest whatsoever in land, nor does it establish a permanent park, recreation area or wildlife or waterfowl refuge Facility that would become subject to Section 4 (f) of the Federal-Aid Highway Act of 1968, nor does this permit establish a Bikeway or Pedestrian way which would require replacement pursuant to Minnesota Statutes Section 160.264. No rights to relocation benefits are established by this permit.

This permit is non-exclusive and is granted subject to the rights of others, including, but not limited to public utilities which may occupy the Area.

5. **APPLICABLE LAWS.** This permit does not release the Permittee from any liability or obligation imposed by federal law, Minnesota Statutes, local ordinances, or other agency regulations relating thereto and any necessary permits relating thereto shall be applied for and obtained by the Permittee.
6. **CIVIL RIGHTS.** The Permittee, for itself, its successors, and assigns, agrees to abide by the provisions of Title VI Appendix C of the Civil Rights Act of 1964, which provides in part that no person in the United States, shall on the grounds of race, color, or national origin, be excluded from, or denied use of any Facility.
7. **SAFETY.** MnDOT shall retain the right to limit and/or restrict any activity, including the parking of vehicles and assemblage of Facility users, on the highway right of way over which this permit is granted, so as to maintain the safety of both the motoring public and Facility users.
8. **ASSIGNMENT.** No assignment of this permit is allowed.
9. **IN WRITING.** Except for those which are set forth in this permit, no representations, warranties, or agreements have been made by MnDOT or Permittee to one another with respect to this permit.
10. **ENVIRONMENTAL.** The Permittee shall not dispose of any materials regulated by any governmental or regulatory agency onto the ground, or into any body of water, or into any container on the State's right of way. In the event of spillage of regulated materials, the Permittee shall provide for cleanup of the spilled material and of materials contaminated by the spillage in accordance with all applicable federal, state and local laws and regulations, at the sole expense of the Permittee.
11. **MECHANIC'S LIENS.** The Permittee (for itself, its contractors, subcontractors, its materialmen, and all other persons acting for, through or under it or any of them), covenants that no laborers', mechanics', or materialmen's liens or other liens or claims of any kind whatsoever shall be filed or maintained by it or by any subcontractor, materialmen or other person or persons acting for, through or under it or any of them against the work and/or against said lands, for or on account

of any work done or materials furnished by it or any of them under any agreement or any amendment or supplement thereto.

- 12 NOTICES. All notices which may be given, by either party to the other, will be deemed to have been fully given when served personally on MnDOT or Permittee or when made in writing addressed as follows: to Permittee at:

Office of the Mayor
PO Box 279
303 Ninth Str
Worthington, MN 56187

and to MnDOT at:

State of Minnesota
Department of Transportation
District 7 Permits
180 County Road 26
Windom, MN 56101

The address to which notices are mailed may be changed by written notice given by either party to the other.

- 13 INDEMNITY. Permittee shall defend, indemnify, hold harmless and release the State of Minnesota, its Commissioner of Transportation and employees and its successors and assigns, from and against:
- (a) all claims, demands, and causes of action for injury to or death of persons or loss of or damage to property (including Permittee's property) occurring on the Facility or connected with Permittee's use and occupancy of the Area, regardless of whether such injury, death, loss or damage is caused in part by the negligence of State of Minnesota or is deemed to be the responsibility of State of Minnesota because of its failure to supervise, inspect or control the operations of Permittee or otherwise discover or prevent actions or operations of Permittee giving rise to liability to any person.
 - (b) claims arising or resulting from the temporary or permanent termination of Facility user rights on any portion of highway right of way over which this permit is granted;
 - (c) claims resulting from temporary or permanent changes in drainage patterns resulting in flood damages;
 - (d) any laborers', mechanics', or materialmens' liens or other liens or claims of any kind whatsoever filed or maintained for or on account of any work done or materials furnished; and
 - (e) any damages, testing costs and clean-up costs arising from spillage of regulated materials attributable to the construction, maintenance or operation of the Facility.

MINNESOTA DEPARTMENT
OF TRANSPORTATION

RECOMMENDED FOR APPROVAL

By: _____
District Engineer

Date _____

APPROVED BY:

COMMISSIONER OF TRANSPORTATION

By: _____
Director, Office of Land Management

Date _____

CITY OF WORTHINGTON

By _____

Its _____

And _____

Its _____

The Commissioner of Transportation
by the execution of this permit
certifies that this permit is
necessary in the public interest
and that the use intended is for
public purposes.

Exhibit "A"



Google earth



Exhibit 1.6



Exhibit 1.8

GENERAL NOTES AND SPECIFICATIONS:

DESIGN AND LOADING

THE STRUCTURAL DESIGN OF THIS BUILDING WAS BASED ON THE DESIGN CRITERIA:

- 1. BUILDING CODE: 2003 INTERNATIONAL BUILDING CODE
- 2. ROOF LIVE LOAD: 35 PSF
- 3. ROOF SNOW LOAD:
 - GROUND SNOW LOAD: 50 PSF
 - FLAT SNOW LOAD: 23 PSF
 - SNOW EXPOSURE FACTOR, C_e : 1.0
 - SNOW LOAD IMPORTANCE FACTOR, I_s : 1.0
 - THERMAL COEFFICIENT, C_t : 1.0
- 4. BASIC WIND SPEED: 90 MPH (3-SECOND GUST)
- WIND IMPORTANCE FACTOR: 1.00
- BUILDING CATEGORY: I
- WIND EXPOSURE: B
- PRESSURES PER IBG SECTION 1609.6
- 5. SEISMIC:
 - SEISMIC USE GROUP I
 - SEISMIC DESIGN CATEGORY: C
 - S_{ds} : 0.375, S_{d1} : 0.224
 - WOOD BEARING WALL SYSTEM (R = 6)
 - BRACED FRAME (R = 4)
 - DESIGN BASE SHEAR = 16.644K (MAX)
 - ANALYSIS PROCEDURE: EQUIVALENT LATERAL FORCE

FOUNDATION NOTES

THE FOUNDATION DESIGN OF THIS BUILDING WAS BASED ON THE FOLLOWING CRITERIA:

- 1. MINIMUM ALLOWABLE SOIL BEARING CAPACITY = 2000 PSF (ASSUMED)
 - 2. SOIL BORINGS MUST BE TAKEN PRIOR TO CONSTRUCTION TO VERIFY THE ACTUAL ALLOWABLE SOIL BEARING CAPACITY AND FOUNDATION SYSTEM.
 - 3. FOUNDATIONS INDICATED MUST BE MODIFIED IF THE ACTUAL SOIL BEARING CAPACITY IS LESS THAN THE VALUE NOTED IN ITEM #1.
- ALL EXTERIOR FOOTINGS SHALL EXTEND BELOW THE MAXIMUM ANTICIPATED DEPTH OF FROST.

THE CONTRACTOR SHALL NOTIFY THE ARCHITECT OR ENGINEER OF RECORD IMMEDIATELY IN THE EVENT THAT THE SOILS CONDITIONS ENCOUNTERED VARY FROM THOSE SHOWN ON THE BORING LOGS.

ALL FOUNDATION EXCAVATIONS SHALL BE INSPECTED BY A SOILS TESTING LABORATORY PRIOR TO PLACEMENT OF CONCRETE.

CONCRETE AND REINFORCING

ALL CONCRETE SHALL BE IN ACCORDANCE WITH THE "AMERICAN CONCRETE INSTITUTE BUILDING CODE" (ACI 318) AND WITH "SPECIFICATIONS FOR STRUCTURAL CONCRETE FOR BUILDINGS" (ACI 301) LATEST EDITIONS.

ALL NORMAL WEIGHT CONCRETE (145 PCF) SHALL OBTAIN A MINIMUM 28 DAY COMPRESSIVE STRENGTH OF 3000 PSI (3500 PSI FOR SLABS).

ALL CONCRETE SUBJECT TO EXTERIOR EXPOSURE SHALL BE AIR ENTRAINED AS RECOMMENDED BY ACI 318.

TEST CYLINDERS SHALL BE MADE AND TESTED AS OUTLINED IN CHAPTER 16 OF ACI-301.

REINFORCING BARS SHALL BE DEFORMED BARS OF NEW BILLET STEEL CONFORMING TO ASTM A-615, GRADE 60. WELDED WIRE FABRIC SHALL CONFORM TO ASTM A-185. ALL REINFORCING AND ACCESSORIES SHALL BE DETAILED AND PLACED IN ACCORDANCE WITH ACI STANDARD 315-99 AND 318R-99.

PROVIDE ALL ACCESSORIES NECESSARY TO SUPPORT REINFORCEMENT AT POSITIONS SHOWN ON THE PLANS AND DETAILS. PLASTIC COATED ACCESSORIES SHALL BE USED IN ALL EXPOSED CONCRETE WORK.

THE GENERAL CONTRACTOR SHALL CHECK WITH ARCHITECTURAL, MECHANICAL AND ELECTRICAL DRAWINGS AND THE SUB-CONTRACTORS FOR OPENINGS, SLEEVES, ANCHORS, HANGERS, INSERTS, SLAB DEPRESSIONS AND OTHER ITEMS RELATED TO THE CONCRETE WORK AND SHALL ASSUME RESPONSIBILITY FOR THEIR PROPER LOCATION.

STRUCTURAL STEEL

STRUCTURAL STEEL SHALL BE DETAILED, FABRICATED AND ERECTED IN ACCORDANCE WITH THE AISC "SPECIFICATION FOR THE DESIGN, FABRICATION AND ERECTION OF STRUCTURAL STEEL FOR BUILDINGS" AND THE AISC "CODE OF STANDARD PRACTICE". STRUCTURAL STEEL SHALL CONFORM TO THE FOLLOWING ASTM SPECIFICATIONS:

ANCHOR BOLTS	A307
HIGH STRENGTH STRUCTURAL BOLTS	A325-N UNF.
STRUCTURAL SHAPES	A992 (MIN)
STRUCTURAL PLATES	A36 (MIN)
STRUCTURAL TUBING	A500 GRADE B

ALL WELDING ELECTRODES SHALL BE E70-XX. ALL SHOP AND FIELD WELDING SHALL BE MADE IN ACCORDANCE WITH AWS D1.1-02 "CODE FOR WELDING IN BUILDING CONSTRUCTION" AND SHALL BE MADE BY CERTIFIED WELDERS.

SAWN LUMBER

ALL GRADES OF LUMBER SHALL BE RATED BY THE NATIONAL LUMBER GRADES AUTHORITY (NLGA), OR THE WESTERN WOOD PRODUCTS ASSOCIATION (WWPA). LUMBER GRADES SHALL BE AS FOLLOWS, WITH A MAXIMUM MOISTURE CONTENT OF 19%:

- * SPRUCE PINE FIR NO. 2
- * DOUGLAS FIR-LARCH NO. 1.
- * HEM-FIR NO. 1

BOLT HEADS AND NUTS BEARING ON WOOD SHALL BE PROVIDED WITH STANDARD CUT WASHERS. ALL WOOD IN CONTACT WITH CONCRETE OR MASONRY SHALL BE PRESSURE TREATED.

MINIMUM NAILED CONNECTIONS FOR WOOD FRAMING MEMBERS SHALL BE IN ACCORDANCE WITH THE LOCAL BUILDING CODE OR TABLE 2304.4.1 OF THE INTERNATIONAL BUILDING CODE, 2003 EDITION, IF NO OTHER CRITERIA IS GIVEN.

CONNECTORS SHOWN ON THE DETAILS ARE MANUFACTURED BY UNITED STEEL PRODUCTS. WRITTEN APPROVAL BY ENGINEER REQUIRED FOR SUBSTITUTIONS.

ABBREVIATIONS:

ABV	ABOVE	INT	INTERIOR
ACT	ACOUSTICAL CEILING TILE	MAX	MAXIMUM
AF	ABOVE FINISHED FLOOR	MECH	MECHANICAL
ALUM	ALUMINUM	MFR	MANUFACTURER
ANC	ANCHOR	MTL	METAL
ARCH	ARCHITECTURAL	MIN	MINIMUM
BLKS	BLOCKING	MISC	MISCELLANEOUS
BD	BOARD	MO	MASONRY OPENING
BLDG	BUILDING	N/C	NON-COMBUSTIBLE
BLN	BELOW	N/A	NOT APPLICABLE
CPT	CARPET	NG	NOT IN CONTRACT
CIP	CAST IN PLACE	NLB	NON-LOAD BEARING
CJT	CONTROL JOINT	NO	NUMBER
CLG	CEILING	OC	ON CENTER
CLR	CLEAR	OD	OUTSIDE DIAMETER
CMU	CONCRETE MASONRY UNIT	OH	OVERHEAD
CONF	CONFERENCE	OPS	OPENING
CONSTR	CONSTRUCTION	OPF	OPERABLE PANEL PARTITION
CORR	CORRIDOR	PND	PLYWOOD
GT	CERAMIC TILE	PCG	PRECAST CONCRETE
GOL	COLUMN	FR	FAIR
GONG	CONCRETE	PRBD	PARTICLE BOARD
GONT	CONTINUOUS	PT	PAINT
DEMO	DEMOLITION	RAD	RADIUS
DIA	DIAMETER	RE	REINFORCE(ING)
DM	DIMENSION	REF	REFERENCE
DN	DOWN	REQD	REQUIRED
DWG	DRAWING	REV	REVERSED
EA	EACH	RDL	ROOF DRAIN LEADER
ELEG	ELECTRIC(AL)	RO	ROUGH OPENING
EQ	EQUAL	SCHED	SCHEDULE(D)
EQP	EQUIPMENT	SHT	SHEET
EXIST	EXISTING	SIM	SIMILAR
EXT	EXTERIOR	SG	SOLID CORE
FBS	FULLERTON BUILDING SYSTEMS	SF	SQUARE FEET
FIBO	FURNISHED & INSTALLED BY OTHERS	STR	STRUCTURAL
FT	FEET	TA	TOILET ACCESSORY
FN	FINISH	T&G	TONGUE AND GROOVE
FE	FIRE EXTINGUISHER	TI	TILE
FLR	FLOOR	TOF	TOP OF FOOTING
FOS	FACE OF STUD	TOFND	TOP OF FOUNDATION
FRP	FIBERGLASS REINFORCED PANEL	TOS	TOP OF STEEL
GA	GAUGE	TOT	TOP OF TRUSS
GC	GENERAL CONTRACTOR	TYF	TYPICAL
GBD	GYP-SUM BOARD	UNO	UNLESS NOTED OTHERWISE
GL	GLASS	VCT	VINYL COMPOSITION TILE
GR	GROUT	VB	VINYL BASE
HDA	HARDWARE	VF	VERIFY IN FIELD
HC	HOLLOW CORE	VERT	VERTICAL
HM	HOLLOW METAL	WC	WATER CLOSET
HORIZ	HORIZONTAL	W/	WITH
HR	HOUR	W/O	WITHOUT
HT	HEIGHT	WD	WOOD
INSUL	INSULATION	WMP	WIRE MESH PARTITION
LB	LOAD BEARING		

SYMBOLS:

	CONCRETE
	CONCRETE MASONRY UNIT
	WOOD
	PLYWOOD
	EIFS, OR GYPSUM
	GRAVEL OR POROUS FILL

	METAL
	BATT INSULATION, SOUND ATTENUATION BLANKET
	RIGID INSULATION
	BITUMINOUS PAVING
	EARTH
	PARTICLE BOARD

	STEEL STUD PARTITION
	DOOR NUMBER INDICATOR
	STOREFRONT IDENTIFICATION
	FINISH IDENTIFICATION
	DEMOLITION NOTE
	PLAN NOTE

	WALL TYPE INDICATOR
	REVISION NUMBER
	CUT LINE INDICATOR
	OFFICE ROOM NUMBER REFERENCE
	DETAIL NUMBER SHEET NUMBER
	DATUM REFERENCE

	GRID NUMBER REFERENCE
	DETAIL REFERENCE
	ELEVATION REFERENCE
	SECTION REFERENCE
	PANEL MARKER

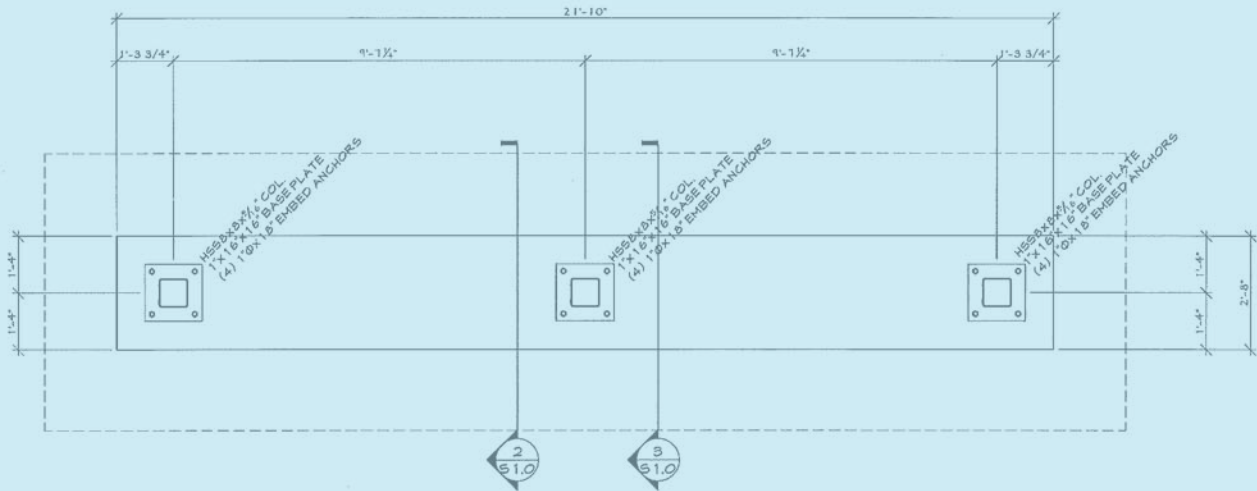
T.H.60 ENTRANCE SIGNS
NORTHINGTON, MINNESOTA



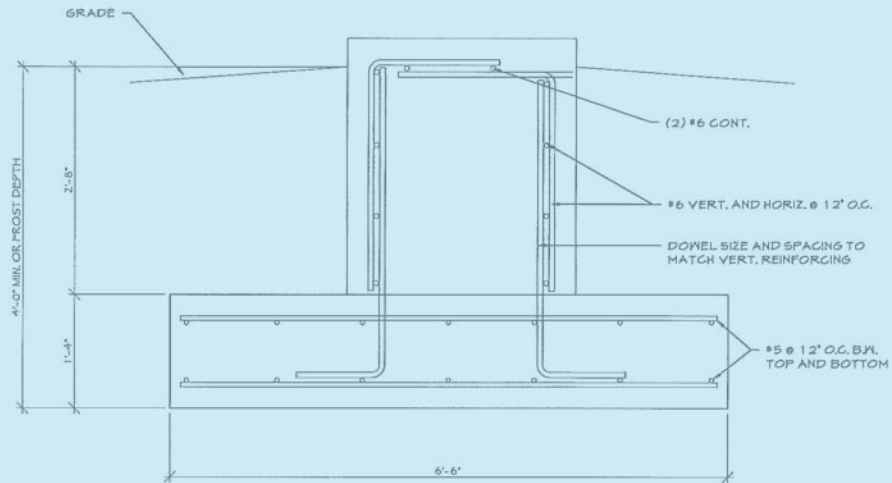
INDEX OF DRAWINGS

SHEET	SHEET NAME
S0.0	COVER SHEET
S1.0	FOUNDATION PLAN
S2.0	SIGN PLAN

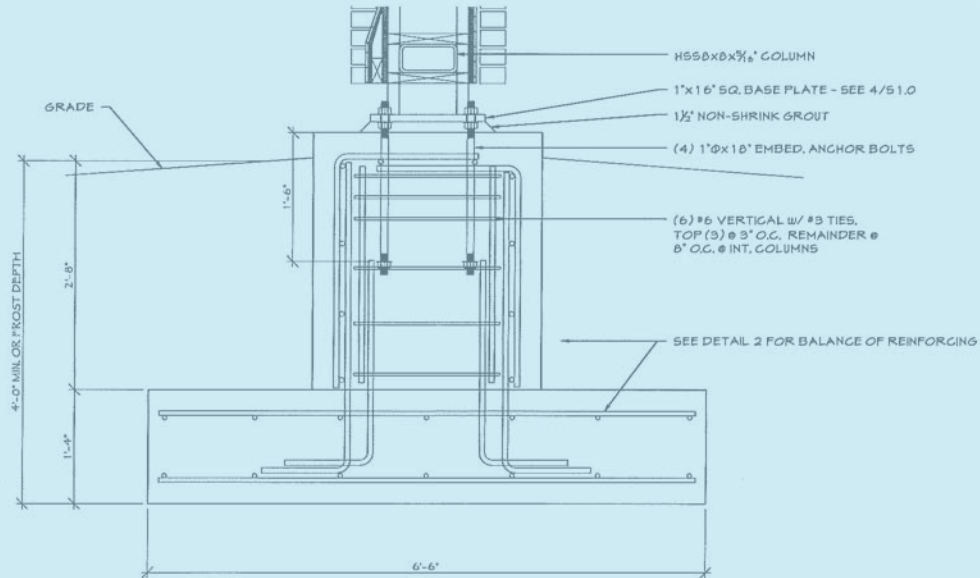
PROJECT: T.H.60 ENTRANCE SIGNS	DESIGNED FOR: CITY OF NORTHINGTON	SITE LOCATION: NORTHINGTON, MINNESOTA 56187	JOB NUMBER	DESIGNER: DR
				REFERENCE
OPTIONS:	DATE 05.01.2014	DRAWING NUMBER	SHEET NAME: COVER SHEET	SHEET NUMBER
				S0.0



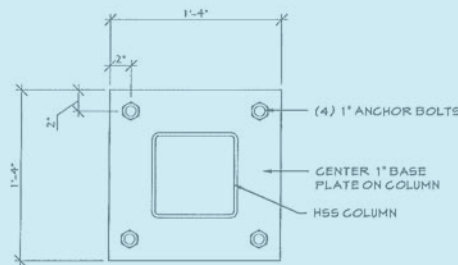
1 FOUNDATION PLAN
SCALE 1/2" = 1'-0"



2 FOUNDATION DETAIL
SCALE 1" = 1'-0"

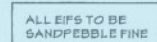


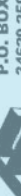
3 FOUNDATION DETAIL
SCALE 1" = 1'-0"



4 COLUMN BASE
SCALE 1 1/2" = 1'-0"

PROJECT: T.H.60 ENTRANCE SIGNS		DESIGNED FOR: CITY OF WORTHINGTON		SITE LOCATION: WORTHINGTON, MINNESOTA 56187	
OPTIONS:		JOB NUMBER		DRAWN BY: DR	
REFERENCE		FILE NAME:		DATE 05.01.2014	
DRAWING NUMBER		SHEET NAME: FOUNDATION PLAN		SHEET NUMBER	
S1.0		S1.0		S1.0	
REV.		DATE		BY	
DESCRIPTION		1		2	
3		4		5	
6		7		8	
9		10		11	
12		13		14	
15		16		17	
18		19		20	
21		22		23	
24		25		26	
27		28		29	
30		31		32	
33		34		35	
36		37		38	
39		40		41	
42		43		44	
45		46		47	
48		49		50	
51		52		53	
54		55		56	
57		58		59	
60		61		62	
63		64		65	
66		67		68	
69		70		71	
72		73		74	
75		76		77	
78		79		80	
81		82		83	
84		85		86	
87		88		89	
90		91		92	
93		94		95	
96		97		98	
99		100		101	
102		103		104	
105		106		107	
108		109		110	
111		112		113	
114		115		116	
117		118		119	
120		121		122	
123		124		125	
126		127		128	
129		130		131	
132		133		134	
135		136		137	
138		139		140	
141		142		143	
144		145		146	
147		148		149	
150		151		152	
153		154		155	
156		157		158	
159		160		161	
162		163		164	
165		166		167	
168		169		170	
171		172		173	
174		175		176	
177		178		179	
180		181		182	
183		184		185	
186		187		188	
189		190		191	
192		193		194	
195		196		197	
198		199		200	
201		202		203	
204		205		206	
207		208		209	
210		211		212	
213		214		215	
216		217		218	
219		220		221	
222		223		224	
225		226		227	
228		229		230	
231		232		233	
234		235		236	
237		238		239	
240		241		242	
243		244		245	
246		247		248	
249		250		251	
252		253		254	
255		256		257	
258		259		260	
261		262		263	
264		265		266	
267		268		269	
270		271		272	
273		274		275	
276		277		278	
279		280		281	
282		283		284	
285		286		287	
288		289		290	
291		292		293	
294		295		296	
297		298		299	
300		301		302	
303		304		305	
306		307		308	
309		310		311	
312		313		314	
315		316		317	
318		319		320	
321		322		323	
324		325		326	
327		328		329	
330		331		332	
333		334		335	
336		337		338	
339		340		341	
342		343		344	
345		346		347	
348		349		350	
351		352		353	
354		355		356	
357		358		359	
360		361		362	
363		364		365	
366		367		368	
369		370		371	
372		373		374	
375		376		377	
378		379		380	
381		382		383	
384		385		386	
387		388		389	
390		391		392	
393		394		395	
396		397		398	
399		400		401	



PROJECT: T.H.60 ENTRANCE SIGNS		 <p>FULLERTON BUILDING SYSTEMS, INC. P.O. BOX 308 34620 250th STREET WORTHINGTON, MN 56187 PH (507) 376-3128 FAX (507) 376-9530</p>	REV.	DATE	BY	DESCRIPTION
DRAWN BY: DR			1	10.20.2014	DR	LOWERED THE HIGH TOWER
REFERENCE			2			
FILE NAME:		OPTIONS:				
DATE 05.01.2014		JOB NUMBER	DESIGNED FOR: CITY OF WORTHINGTON			
DRAWING NUMBER		SITE LOCATION:				
SHEET NAME: WALL FRAMING PLAN		WORTHINGTON, MINNESOTA 56187				
SHEET NUMBER S2.0						

**CITY OF WORTHINGTON
C.S. 5305 (T.H. 60)**

RESOLUTION

BE IT RESOLVED by the City Council of the City of Worthington, Minnesota, that the City enter into a permit with the Commissioner of Transportation of the State of Minnesota providing for the limited use, under the terms and conditions set forth therein, of certain right of way of Trunk Highway 60 near the City.

The limited use of the right of way will be for the purpose of constructing, maintaining, and operating Municipal Identification Entrance Signs within the right of way of Trunk Highway 60 at the location designated and shown on the attached copy of Exhibit "A".

The Mayor and City Clerk are authorized to execute said permit on behalf of the City.

PASSED AND ADOPTED BY THE CITY OF WORTHINGTON, MINNESOTA.

THIS 24th DAY OF NOVEMBER, 2014.

ATTEST: _____

Approved this _____ day of _____, 2014.

CITY OF WORTHINGTON, MN

**First Amendment
to the
Agreement for Contract Operations and Maintenance
of the
City of Worthington, Minnesota
Industrial Wastewater Treatment Facility**

This first amendment (“First Amendment”) to the Agreement for Contract Operations and Maintenance of the City of Worthington, Minnesota Industrial Wastewater Treatment Facility is made, entered into and agreed to as of November ___, 2014 (“Effective Date”), by and between the City of Worthington, Minnesota (“City”) and Environmental Management Corporation (“EMC”). The City and EMC sometimes are referred to herein individually as a “Party” and collectively as the “Parties”.

WHEREAS, the City and EMC are Parties to that certain Agreement of Contract Operations and Maintenance of the City of Worthington, Minnesota, Industrial Wastewater Treatment Facility, effective July 1, 2014 (“Agreement”); and

WHEREAS, effective January 1, 2014, the Facility’s NPDES permit MN0031178 requires the dechlorination of the Facility’s effluent; and

WHEREAS, at the time the Parties entered into the Agreement, the Parties did not know the annual costs related to the dechlorination of the effluent and agreed that the Agreement would be amended once those costs were known to the Parties; and

WHEREAS, the Parties now desire to modify the Agreement such that effective December 1, 2014, EMC’s compensation shall be increased by \$204.00 monthly (\$2,448.00 annually), with payment retroactive to January 1, 2014, to cover the additional scope of services that now includes the cost of dechlorination of the Facility’s effluent according to the City’s NPDES permit; and

WHEREAS, the City and EMC desire to modify the Agreement upon the terms and conditions as set forth in this First Amendment.

NOW, THEREFORE, in consideration of the mutual covenants and agreements herein contained, the Parties hereby agree as follows:

1. Article IV, Compensation and Expenses is amended such that the first paragraph of the “ Compensation” section is deleted in its entirety and replaced with the following:

A. Compensation. All the compensation amounts in the Compensation and Expenses section are the current values as of January 1, 2014. The City shall pay EMC, as

compensation for the EMC Services, \$38,490.13 per month. As is more fully set forth in IV. B. below, the City shall also pay EMC monthly fees for minor maintenance and repair expenses: biosolids disposal expenses. All monthly payments are due, in advance, of the month to which such payment relates. The City shall be invoiced by the fifth (5th) of the month, and payment shall be made by the twenty eighth (28th) of the month.

2. To the extent not modified by this First Amendment, all terms and conditions of the Agreement shall remain unchanged and in full force and effect.

3. If there are any conflicts or inconsistencies between this First Amendment and the Agreement, the terms and conditions set forth in this First Amendment shall prevail with respect thereto.

4. Any capitalized terms used but not defined herein shall have the meaning set forth in the Agreement.

5. This First Amendment may be executed in any number of original counterparts. All such counterparts shall constitute one and the same First Amendment.

6. Each person signing this First Amendment represents and warrants that he or she is duly authorized and has legal capacity to execute and deliver this First Amendment on behalf of the respective Party. Each Party represents and warrants to the other that the execution and delivery of this First Amendment and the performance of such Party's obligations hereunder have been duly authorized by its governing board, have been made in accordance with applicable law, and that the First Amendment is a valid and legal agreement binding on such Party and enforceable in accordance with its terms.

[SIGNATURE PAGE TO FOLLOW]

IN WITNESS WHEREOF and intending to be legally bound hereby and with the duly authorized delegation of authority to enter into this First Amendment, the Parties hereto have set their hands and have caused these presents to be executed the day and year first above written.

THE CITY OF WORTHINGTON, MINNESOTA

By:_____

Name: Alan Oberloh

Title: Mayor

ENVIRONMENTAL MANAGEMENT CORPORATION

By:_____

Name:

Title:

VENDOR SORT KEY	DATE	DESCRIPTION	FUND	DEPARTMENT	AMOUNT_
AMERIPRIDE	11/14/14	TOWEL SERVICE OCTOBER	MUNICIPAL WASTEWAT	O-PURIFY MISC	88.33_
				TOTAL:	88.33
B & J OIL CO	11/14/14	MOBIL SYNTHETIC 75-90-JET	MUNICIPAL WASTEWAT	M-SOURCE MAINS & LIFTS	110.40
	11/14/14	MOBIL SHC 629	MUNICIPAL WASTEWAT	M-PURIFY EQUIPMENT	194.00_
				TOTAL:	304.40
BANNER ASSOCIATES INC	11/14/14	PROFESSIONAL SERVICES-SCAD WATER		FA PURIFY EQUIPMENT	9,331.35_
				TOTAL:	9,331.35
BRADLEY BEHREND	11/14/14	TRUCK LETTERING	WATER	O-DISTR MISC	224.00_
				TOTAL:	224.00
BLACK KEVIN	11/14/14	COMPRESSOR RENTAL-UNITED R RECREATION		GOLF COURSE-GREEN	1,591.13_
				TOTAL:	1,591.13
BORDER STATES ELECTRIC SUPPLY	11/14/14	36 CANS GREEN MARKING PAIN	MUNICIPAL WASTEWAT	O-SOURCE MAINS & LIFTS	53.64
	11/14/14	36 CANS GREEN MARKING PAIN	STORM WATER MANAGE	STORM DRAINAGE	53.64_
				TOTAL:	107.28
BUFFALO RIDGE CONCRETE INC	11/14/14	CONCRETE	GENERAL FUND	PAVED STREETS	46.00_
				TOTAL:	46.00
CULLIGAN WATER COND CO	11/14/14	MONTHLY SERVICE	WATER	O-DISTR MISC	41.00_
				TOTAL:	41.00
DACOTAH PAPER CO	11/14/14	RETURNED ITEMS	LIQUOR	O-GEN MISC	86.22-
	11/14/14	TOILET PAPER	LIQUOR	O-GEN MISC	74.84
	11/14/14	BAGS	LIQUOR	O-GEN MISC	264.25_
				TOTAL:	252.87
DAKOTA SUPPLY GROUP INC	11/14/14	DISTRIBUTION MAIN SUPPLIES WATER		M-TRANS MAINS	637.28_
				TOTAL:	637.28
ECHO GROUP INC	11/14/14	SHOP LIGHT BALLAST	WATER	M-DIST STRUCTURES	20.53
	11/14/14	CABLE TIES	MUNICIPAL WASTEWAT	O-PURIFY MISC	38.80
	11/14/14	CABLE TIES	MUNICIPAL WASTEWAT	O-PURIFY MISC	38.80
	11/14/14	PUSH BUTTON-BOOM CONTROL	STORM WATER MANAGE	STORM DRAINAGE	8.77_
				TOTAL:	106.90
FERGUSON WATERWORKS INC #2516	11/14/14	12X6 TAPPING SADDLE (PURNE WATER		O-DIST UNDERGRND LINES	857.40_
				TOTAL:	857.40
FRONTIER COMMUNICATIONS	11/14/14	ICAC REIMBURSED INTERNET	GENERAL FUND	POLICE ADMINISTRATION	107.63_
				TOTAL:	107.63
GELDNER UNDERGROUND INC	11/14/14	WELL FIBER OPTICS DUCT INS WATER		FA PURIFY EQUIPMENT	24,555.00
	11/14/14	HANDHOLE INSTALLS/ADDTL DU WATER		FA PURIFY EQUIPMENT	3,055.00_
				TOTAL:	27,610.00
GOPHER STATE ONE CALL INC	11/14/14	MONTHLY LOCATE SERVICES	WATER	O-DISTR MISC	61.99
	11/14/14	MONTHLY LOCATE SERVICES	MUNICIPAL WASTEWAT	O-SOURCE MAINS & LIFTS	61.98
	11/14/14	MONTHLY LOCATE SERVICES	ELECTRIC	O-DISTR MISC	123.98_
				TOTAL:	247.95
GRABER DIANE M	11/14/14	REIMBURSE	GENERAL FUND	MAYOR AND COUNCIL	23.52

VENDOR SORT KEY	DATE	DESCRIPTION	FUND	DEPARTMENT	AMOUNT_
				TOTAL:	23.52
GREEN T PRODUCTIONS	11/14/14	DEPOSIT-PINOCCHIO-CHAN	MEMORIAL AUDITORIUM	MEMORIAL AUDITORIUM	1,250.00_
				TOTAL:	1,250.00
HACH COMPANY	11/14/14	CHEMICALS	MUNICIPAL WASTEWAT	O-PURIFY LABORATORY	551.39
	11/14/14	CHEMICALS	MUNICIPAL WASTEWAT	O-PURIFY LABORATORY	734.25
	11/14/14	PIPET TIPS AND FILTERS	MUNICIPAL WASTEWAT	O-PURIFY LABORATORY	473.34_
				TOTAL:	1,758.98
HAWKINS INC	11/14/14	2 TONS CHLORINE	WATER	O-PURIFY	1,295.00
	11/14/14	CHEMICALS	WATER	O-PURIFY	4,389.37_
				TOTAL:	5,684.37
IDE@S	11/14/14	COMPUTER FAN-SCADA COMPUTE	WATER	M-PURIFY EQUIPMENT	4.99_
				TOTAL:	4.99
JAYCOX IMPLEMENT INC	11/14/14	BEARING BALL	RECREATION	PARK AREAS	12.74
	11/14/14	HYDRAULIC HOSE-KUBOTA	RECREATION	PARK AREAS	78.20
	11/14/14	COTTER KEYS	ELECTRIC	O-DISTR MISC	1.16_
				TOTAL:	92.10
JERRY'S AUTO SUPPLY	11/14/14	PUMP REPAIR PARTS	WATER	M-PURIFY EQUIPMENT	22.47
	11/14/14	PUMP REPAIR PARTS	WATER	M-PURIFY EQUIPMENT	8.75_
				TOTAL:	31.22
KARLS CARQUEST AUTO PARTS INC	11/14/14	BATTERY	GENERAL FUND	POLICE ADMINISTRATION	75.18
	11/14/14	CAR LIGHTS	GENERAL FUND	POLICE ADMINISTRATION	35.98
	11/14/14	BRAKE CLEANER	GENERAL FUND	PAVED STREETS	15.37
	11/14/14	BATTERY TERMINAL	RECREATION	PARK AREAS	3.83
	11/14/14	LIGHT BULB #209	WATER	O-DIST UNDERGRND LINES	3.54_
				TOTAL:	133.90
LAW ENFORCEMENT LABOR SERVICES INC #27	11/14/14	UNION DUES	GENERAL FUND	NON-DEPARTMENTAL	180.00_
				TOTAL:	180.00
MARCO	11/14/14	COPIER SERVICE-SHARP/M450N	GENERAL FUND	SECURITY CENTER	13.40
	11/14/14	COPIER SERVICE-SHARP/M450N	GENERAL FUND	SECURITY CENTER	13.39_
				TOTAL:	26.79
MINNESOTA ENERGY RESOURCES CORP	11/14/14	GAS SERVICE	GENERAL FUND	GENERAL GOVT BUILDINGS	186.83
	11/14/14	GAS SERVICE	GENERAL FUND	FIRE ADMINISTRATION	137.34
	11/14/14	GAS SERVICE	GENERAL FUND	PAVED STREETS	16.86
	11/14/14	GAS SERVICE	GENERAL FUND	CENTER FOR ACTIVE LIVI	271.63
	11/14/14	GAS SERVICE	RECREATION	OLSON PARK CAMPGROUND	71.47
	11/14/14	GAS SERVICE	ECONOMIC DEV AUTHO	TRAINING/TESTING CENTE	277.92
	11/14/14	GAS SERVICE	WATER	O-DISTR MISC	16.86
	11/14/14	GAS SERVICE	MUNICIPAL WASTEWAT	O-PURIFY MISC	825.26
	11/14/14	GAS SERVICE	AIRPORT	O-GEN MISC	87.86
	11/14/14	GAS SERVICE	AIRPORT	O-GEN MISC	39.58_
				TOTAL:	1,931.61
MINNESOTA EROSION CONTROL ASSOCIATION	11/14/14	MS4 PERMIT WORKSHOP-HAFFIE	GENERAL FUND	ENGINEERING ADMIN	85.00_
				TOTAL:	85.00
MISCELLANEOUS V BAUMGARD COLE	11/14/14	CUSTOMER REBATE	ELECTRIC	CUSTOMER INSTALL EXPEN	50.00

VENDOR SORT KEY	DATE	DESCRIPTION	FUND	DEPARTMENT	AMOUNT_
BLOCK GRETCHEN	11/14/14	CUSTOMER REBATE	ELECTRIC	CUSTOMER INSTALL EXPEN	17.50
HUBBARD HANG	11/14/14	REISSUE CHECK	ELECTRIC	NON-DEPARTMENTAL	105.19
KHAING MYO	11/14/14	REFUND OF DEPOSITS-ACCTS F	ELECTRIC	NON-DEPARTMENTAL	172.27
KHAING MYO	11/14/14	REFUND OF DEPOSITS-ACCTS F	ELECTRIC	ACCTS-RECORDS & COLLEC	0.20
MALDONADO GREEN, WALBE	11/14/14	REFUND OF DEPOSITS-ACCTS F	ELECTRIC	NON-DEPARTMENTAL	45.77
MALDONADO GREEN, WALBE	11/14/14	REFUND OF DEPOSITS-ACCTS F	ELECTRIC	ACCTS-RECORDS & COLLEC	0.05
ORTIZ-FLORES JESUS C	11/14/14	REFUND OF DEPOSITS-ACCTS F	ELECTRIC	NON-DEPARTMENTAL	53.06
ORTIZ-FLORES JESUS C	11/14/14	REFUND OF DEPOSITS-ACCTS F	ELECTRIC	ACCTS-RECORDS & COLLEC	0.08
PEREZ HERRERA GUMERCIN	11/14/14	REFUND OF CREDITS-ACCTS FI	GENERAL FUND	NON-DEPARTMENTAL	12.56
PEREZ HERRERA GUMERCIN	11/14/14	REFUND OF CREDITS-ACCTS FI	ELECTRIC	NON-DEPARTMENTAL	64.62
PEREZ HERRERA GUMERCIN	11/14/14	REFUND OF CREDITS-ACCTS FI	GARBAGE COLLECTION	NON-DEPARTMENTAL	20.03
RADEMACHER JARED	11/14/14	CUSTOMER REBATE	ELECTRIC	CUSTOMER INSTALL EXPEN	75.00
RAMIREZ SEBASTIAN ESPE	11/14/14	REFUND OF CREDITS-ACCTS FI	WATER	NON-DEPARTMENTAL	45.00
RAMIREZ SEBASTIAN ESPE	11/14/14	REFUND OF CREDITS-ACCTS FI	WATER	ACCTS-RECORDS & COLLEC	0.04
RAMIREZ SEBASTIAN ESPE	11/14/14	REFUND OF CREDITS-ACCTS FI	MUNICIPAL WASTEWAT	NON-DEPARTMENTAL	19.84
RAMIREZ SEBASTIAN ESPE	11/14/14	REFUND OF CREDITS-ACCTS FI	MUNICIPAL WASTEWAT	ACCT-RECORDS & COLLECT	0.04
RAMIREZ SEBASTIAN ESPE	11/14/14	REFUND OF CREDITS-ACCTS FI	ELECTRIC	NON-DEPARTMENTAL	95.00
RAMIREZ SEBASTIAN ESPE	11/14/14	REFUND OF CREDITS-ACCTS FI	ELECTRIC	ACCTS-RECORDS & COLLEC	0.07
ZAW MIN	11/14/14	CUSTOMER REBATE	ELECTRIC	CUSTOMER INSTALL EXPEN	50.00_
				TOTAL:	826.32
MORRIS ELECTRONICS INC	11/14/14	TECHNICAL SUPPORT	WATER	ACCTS-RECORDS & COLLEC	17.50
	11/14/14	ANTI-MALWARE	WATER	ACCTS-RECORDS & COLLEC	90.16
	11/14/14	TECHNICAL SUPPORT	MUNICIPAL WASTEWAT	ACCT-RECORDS & COLLECT	17.50
	11/14/14	ANTI-MALWARE	MUNICIPAL WASTEWAT	ACCT-RECORDS & COLLECT	90.16
	11/14/14	TECHNICAL SUPPORT	ELECTRIC	ACCTS-RECORDS & COLLEC	35.00
	11/14/14	ANTI-MALWARE	ELECTRIC	ACCTS-RECORDS & COLLEC	180.32_
				TOTAL:	430.64
NAVASURFW ARCENDIV CRANE	11/14/14	NIGHT VISION EQUIPMENT REN	GENERAL FUND	SECURITY CENTER	300.00
	11/14/14	NIGHT VISION EQUIPMENT REN	GENERAL FUND	SECURITY CENTER	300.00_
				TOTAL:	600.00
NOBLES COUNTY HIGHWAY DEPT	11/14/14	SEPTEMBER FUEL	GENERAL FUND	ENGINEERING ADMIN	537.02
	11/14/14	SEPTEMBER FUEL	GENERAL FUND	ECONOMIC DEVELOPMENT	96.23
	11/14/14	SEPTEMBER FUEL	GENERAL FUND	POLICE ADMINISTRATION	4,614.88
	11/14/14	SEPTEMBER FUEL	GENERAL FUND	REGULATE LAWFUL GAMBLE	10.98
	11/14/14	SEPTEMBER FUEL	GENERAL FUND	ANIMAL CONTROL ENFORCE	185.28
	11/14/14	SEPTEMBER FUEL	GENERAL FUND	PAVED STREETS	513.72
	11/14/14	SEPTEMBER FUEL	GENERAL FUND	CODE ENFORCEMENT	109.68
	11/14/14	SEPTEMBER FUEL	RECREATION	PARK AREAS	1,703.68
	11/14/14	SEPTEMBER FUEL	RECREATION	TREE REMOVAL	274.00
	11/14/14	SEPTEMBER FUEL	WATER	O-PUMPING	346.86
	11/14/14	SEPTEMBER FUEL	WATER	M-TRANS MAINS	873.23
	11/14/14	SEPTEMBER FUEL	MUNICIPAL WASTEWAT	O-SOURCE MAINS & LIFTS	432.79
	11/14/14	SEPTEMBER FUEL	MUNICIPAL WASTEWAT	O-PURIFY SUPERVISION	109.05
	11/14/14	SEPTEMBER FUEL	MUNICIPAL WASTEWAT	O-PURIFY MISC	359.57
	11/14/14	SEPTEMBER FUEL	MUNICIPAL WASTEWAT	O-PURIFY MISC	45.11
	11/14/14	SEPTEMBER FUEL	MUNICIPAL WASTEWAT	M-SOURCE MAINS & LIFTS	119.87
	11/14/14	SEPTEMBER FUEL	ELECTRIC	O-DISTR UNDERGRND LINE	1,445.23
	11/14/14	SEPTEMBER FUEL	STORM WATER MANAGE	STORM DRAINAGE	780.58
	11/14/14	SEPTEMBER FUEL	STORM WATER MANAGE	STORM DRAINAGE	468.61
	11/14/14	SEPTEMBER FUEL	STORM WATER MANAGE	STREET CLEANING	857.82_
				TOTAL:	13,884.19
NOBLES COUNTY LANDFILL	11/14/14	STREET SWEEPINGS	STORM WATER MANAGE	STREET CLEANING	4,327.50

VENDOR SORT KEY	DATE	DESCRIPTION	FUND	DEPARTMENT	AMOUNT_
				TOTAL:	4,327.50
NORTH CENTRAL INTERNATIONAL INC	11/14/14	BUFFER SOLUTION	MUNICIPAL WASTEWAT	O-PURIFY LABORATORY	146.63_
				TOTAL:	146.63
O'REILLY AUTO PARTS	11/14/14	LIGHT BULBS	GENERAL FUND	POLICE ADMINISTRATION	24.12
	11/14/14	SCREWDRIVER	GENERAL FUND	POLICE ADMINISTRATION	9.12_
				TOTAL:	33.24
RUNNINGS SUPPLY INC-ACCT#9502440	11/14/14	TOOLBOX UNIT #201	WATER	O-DIST UNDERGRND LINES	249.91
	11/14/14	OPERATING SUPPLIES	WATER	O-DIST UNDERGRND LINES	17.83
	11/14/14	PAINT THINNER	WATER	M-PURIFY EQUIPMENT	7.99
	11/14/14	PUMP REPAIR PARTS	WATER	M-PURIFY EQUIPMENT	8.88
	11/14/14	SCADA BATTERIES	WATER	M-PURIFY EQUIPMENT	4.99
	11/14/14	OPERATING SUPPLIES	WATER	M-PURIFY EQUIPMENT	3.92_
				TOTAL:	293.52
SANKEY RODNEY	11/14/14	REIMBURSE	GENERAL FUND	MAYOR AND COUNCIL	93.26_
				TOTAL:	93.26
SCHWALBACH ACE #6067	11/14/14	PLUMBERS CLOTH	WATER	O-DISTR MISC	12.98
	11/14/14	HOSE COUPLINGS	WATER	O-DISTR MISC	8.97_
				TOTAL:	21.95

===== FUND TOTALS =====

101	GENERAL FUND	8,014.98
229	RECREATION	3,735.05
231	ECONOMIC DEV AUTHORITY	277.92
601	WATER	46,212.79
602	MUNICIPAL WASTEWATER	4,510.75
604	ELECTRIC	2,514.50
606	STORM WATER MANAGEMENT	6,496.92
609	LIQUOR	252.87
612	AIRPORT	127.44
614	MEMORIAL AUDITORIUM	1,250.00
873	GARBAGE COLLECTION	20.03

GRAND TOTAL: 73,413.25

VENDOR SORT KEY	DATE	DESCRIPTION	FUND	DEPARTMENT	AMOUNT
A & B BUSINESS EQUIPMENT INC	11/21/14	COPIER SERVICE RICOH/MPC45	GENERAL FUND	ENGINEERING ADMIN	12.88
	11/21/14	COPIER SERVICE RICOH/MPC45	GENERAL FUND	ECONOMIC DEVELOPMENT	12.87
	11/21/14	COPIER SERVICE RICOH/AF223	DATA PROCESSING	COPIER/FAX	151.92
				TOTAL:	177.67
AMERICAN ENGINEERING TESTING INC	11/21/14	CYLINDER TESTING	WATER	PROJECT #4	156.00
	11/21/14	CYLINDER TESTING	MUNICIPAL WASTEWAT	PROJECT #7	117.00
	11/21/14	CYLINDER TESTING	STORM WATER MANAGE	PROJECT #12	78.00
	11/21/14	CYLINDER TESTING	STORM WATER MANAGE	PROJECT #25	136.50
				TOTAL:	487.50
AMERICAN WATER ENTERPRISES ENVMENTAL M	11/21/14	CONTRACT OPERATIONS WWTF N	INDUSTRIAL WASTEWA	O-PURIFY MISC	47,613.67
				TOTAL:	47,613.67
ANDERSON ALIGNMENT SERVICE	11/21/14	FREE UP UNLOADER VALVES #5	RECREATION	TREE REMOVAL	289.39
	11/21/14	FREE UP UNLOADER VALVES #5	RECREATION	TREE REMOVAL	360.00
	11/21/14	OIL CHANGE, FROZEN PINS #4	STORM WATER MANAGE	STREET CLEANING	102.00
	11/21/14	OIL CHANGE, FROZEN PINS #4	STORM WATER MANAGE	STREET CLEANING	690.00
	11/21/14	OIL CHANGE, FROZEN PINS #4	STORM WATER MANAGE	STREET CLEANING	159.71
	11/21/14	OIL CHANGES #408	STORM WATER MANAGE	STREET CLEANING	153.00
	11/21/14	OIL CHANGES #408	STORM WATER MANAGE	STREET CLEANING	166.00
	11/21/14	OIL CHANGES #408	STORM WATER MANAGE	STREET CLEANING	193.00
	11/21/14	CONVEYOR BEARINGS UNIT 413	STORM WATER MANAGE	STREET CLEANING	184.95
	11/21/14	CONVEYOR BEARINGS UNIT 413	STORM WATER MANAGE	STREET CLEANING	340.00
	11/21/14	STARTER ON REAR MOTOR #423	STORM WATER MANAGE	STREET CLEANING	85.00
	11/21/14	STARTER ON REAR MOTOR #423	STORM WATER MANAGE	STREET CLEANING	120.81
				TOTAL:	2,843.86
ARCTIC ICE INC	11/21/14	ICE	LIQUOR	NON-DEPARTMENTAL	174.84
				TOTAL:	174.84
ARNT AERIAL SPRAYING INC	11/21/14	REFUND OF CREDITS-ACCTS FI	WATER	NON-DEPARTMENTAL	36.35
				TOTAL:	36.35
ARTISAN BEER COMPANY	11/21/14	BEER	LIQUOR	NON-DEPARTMENTAL	220.85
	11/21/14	BEER	LIQUOR	NON-DEPARTMENTAL	449.00
				TOTAL:	669.85
B&B TECHNOLOGIES INC	11/21/14	HYDRAULIC PUMP SEAL KIT-SP	RECREATION	GOLF COURSE-GREEN	116.20
				TOTAL:	116.20
PETER K BECK ATTORNEY AT LAW PPLC	11/21/14	VERIZON SMALL CELL SITES A	GENERAL FUND	CITY ATTORNEY	2,175.00
				TOTAL:	2,175.00
BEHRENDT JOAN	11/21/14	GENERAL ELECTION	GENERAL FUND	ELECTIONS	153.00
				TOTAL:	153.00
BELLBOY CORP	11/21/14	WINE	LIQUOR	NON-DEPARTMENTAL	776.00
	11/21/14	LIQUOR	LIQUOR	NON-DEPARTMENTAL	904.00
	11/21/14	MIX	LIQUOR	NON-DEPARTMENTAL	83.00
	11/21/14	FREIGHT	LIQUOR	O-SOURCE MISC	44.00
	11/21/14	MIX	LIQUOR	O-SOURCE MISC	0.38
				TOTAL:	1,640.62
BERGER JULIA	11/21/14	GENERAL ELECTION	GENERAL FUND	ELECTIONS	135.00
				TOTAL:	135.00

VENDOR SORT KEY	DATE	DESCRIPTION	FUND	DEPARTMENT	AMOUNT_
BERNING BECKY	11/21/14	GENERAL ELECTION	GENERAL FUND	ELECTIONS	139.50_
				TOTAL:	139.50
BEVERAGE WHOLESALERS INC	11/21/14	BEER	LIQUOR	NON-DEPARTMENTAL	2,570.97
	11/21/14	BEER	LIQUOR	NON-DEPARTMENTAL	3,977.45
	11/21/14	BEER	LIQUOR	NON-DEPARTMENTAL	1,982.05
	11/21/14	BEER	LIQUOR	NON-DEPARTMENTAL	8,124.96
	11/21/14	BEER	LIQUOR	NON-DEPARTMENTAL	570.00_
				TOTAL:	17,225.43
BHS MARKETING LLC	11/21/14	CHEMICALS	INDUSTRIAL WASTEWA	O-PURIFY MISC	8,376.90_
				TOTAL:	8,376.90
BLACK HILLS AMMUNITION INC	11/21/14	AMMUNITION	GENERAL FUND	POLICE ADMINISTRATION	1,295.00_
				TOTAL:	1,295.00
BOLTON & MENK INC	11/21/14	ENVIRONMENTAL ASSESSMENT T AIRPORT		PROJECT #12	1,112.80_
				TOTAL:	1,112.80
BORDER STATES ELECTRIC SUPPLY	11/21/14	CONDUIT 15KV DUCT SYSTEM	ELECTRIC	FA DISTR UNDRGRND COND	4,643.72
	11/21/14	SPLICE BOX 15KV DUCT SYSTE	ELECTRIC	FA DISTR UNDRGRND COND	3,387.94_
				TOTAL:	8,031.66
BOSMA PATRICIA	11/21/14	GENERAL ELECTION	GENERAL FUND	ELECTIONS	139.50_
				TOTAL:	139.50
BRADLEY CHAPULIS	11/21/14	HSA	GENERAL FUND	NON-DEPARTMENTAL	230.00_
				TOTAL:	230.00
BRANDT GARY	11/21/14	GENERAL ELECTION	GENERAL FUND	ELECTIONS	148.50_
				TOTAL:	148.50
BUCHMAN KAREN	11/21/14	GENERAL ELECTION	GENERAL FUND	ELECTIONS	148.50_
				TOTAL:	148.50
CAMERY BERNICE	11/21/14	GENERAL ELECTION	GENERAL FUND	ELECTIONS	216.00_
				TOTAL:	216.00
CARLOS CREEK WINERY	11/21/14	WINE	LIQUOR	NON-DEPARTMENTAL	708.00_
				TOTAL:	708.00
CATAPULT	11/21/14	2014 CAFR COVERS/BACKS	GENERAL FUND	AUDITS AND BUDGETS	317.73
	11/21/14	2015 BUDGET TABS	GENERAL FUND	AUDITS AND BUDGETS	1,906.34_
				TOTAL:	2,224.07
CITIZEN PUBLISHING CO INC	11/21/14	SASSY SATURDAY AD	LIQUOR	O-GEN MISC	55.80_
				TOTAL:	55.80
CLARK CRAIG	11/21/14	CGMC FALL CONFERENCE	GENERAL FUND	ADMINISTRATION	292.72_
				TOTAL:	292.72
COCA-COLA ENTERPRISES-MIDWEST DIVISION	11/21/14	MIX	LIQUOR	NON-DEPARTMENTAL	201.64_
				TOTAL:	201.64
COOPERATIVE ENERGY CO- ACCT # 5910807	11/21/14	KEROSENE	GENERAL FUND	PAVED STREETS	26.00
	11/21/14	WEEDEATER GAS	RECREATION	PARK AREAS	8.30

VENDOR SORT KEY	DATE	DESCRIPTION	FUND	DEPARTMENT	AMOUNT_
				TOTAL:	34.30
COOPERATIVE ENERGY CO- ACCT# 05412019	11/21/14	2 CYCLE OIL, UNLEADED GAS	WATER	M-TRANS MAINS	11.50_
				TOTAL:	11.50
COPPERUD DAVID	11/21/14	GENERAL ELECTION JUDGE	GENERAL FUND	ELECTIONS	162.00_
				TOTAL:	162.00
COUNTY WIDE DIRECTORY	11/21/14	ADVERTISING	LIQUOR	O-GEN MISC	235.00_
				TOTAL:	235.00
DAILY GLOBE	11/21/14	FIRE PREVENTION WEEK ADS	GENERAL FUND	FIRE ADMINISTRATION	124.10
	11/21/14	NEWSPAPERS	LIQUOR	NON-DEPARTMENTAL	29.53_
				TOTAL:	153.63
DAKOTA SUPPLY GROUP INC	11/21/14	TAPPING SADDLE-JIMMY JOHNS	WATER	O-DIST UNDERGRND LINES	73.49
	11/21/14	SERVICE MATERIALS JIMMY JO	WATER	O-DIST UNDERGRND LINES	737.89_
				TOTAL:	811.38
DAVIS TYPEWRITER CO INC	11/21/14	BATTERIES	GENERAL FUND	CLERK'S OFFICE	8.51
	11/21/14	NOTARY STAMP	GENERAL FUND	CLERK'S OFFICE	38.00
	11/21/14	PAPER CLIPS	GENERAL FUND	CLERK'S OFFICE	1.56
	11/21/14	BUDGET COVERS	GENERAL FUND	AUDITS AND BUDGETS	4.83
	11/21/14	ICE MELT, PAPER TOWELS	GENERAL FUND	GENERAL GOVT BUILDINGS	81.02
	11/21/14	PLANNER	GENERAL FUND	POLICE ADMINISTRATION	13.24
	11/21/14	CD/DVD SLEEVE	GENERAL FUND	POLICE ADMINISTRATION	16.04
	11/21/14	FILES, GUIDES, SHEET PROTE	GENERAL FUND	SECURITY CENTER	73.44
	11/21/14	FILES, GUIDES, SHEET PROTE	GENERAL FUND	SECURITY CENTER	73.45
	11/21/14	TOILET PAPER, TRASH BAGS	MEMORIAL AUDITORIUM	MEMORIAL AUDITORIUM	98.46
	11/21/14	TRASH BAGS	MEMORIAL AUDITORIUM	MEMORIAL AUDITORIUM	45.43
	11/21/14	ENVELOPES	DATA PROCESSING	DATA PROCESSING	145.00
	11/21/14	TAPE CORRECTION, REPORT CO	DATA PROCESSING	DATA PROCESSING	17.25_
				TOTAL:	616.23
DEPARTMENT OF FINANCE	11/21/14	SEIZED PROPERTY-MIRANDA	GENERAL FUND	POLICE ADMINISTRATION	26.40_
				TOTAL:	26.40
DETTMAN, DANIEL	11/21/14	GENERAL ELECTION JUDGE	GENERAL FUND	ELECTIONS	144.00_
				TOTAL:	144.00
DOEDEN, KAREN	11/21/14	GENERAL ELECTION JUDGE	GENERAL FUND	ELECTIONS	144.00_
				TOTAL:	144.00
DUBA SHEET METAL WORKS	11/21/14	SERVICE 2 UNITES, FLASHING	LIQUOR	O-GEN MISC	399.23_
				TOTAL:	399.23
DUININCK INC	11/21/14	SHRUB, BRUSH REMOVAL AIRPO	AIRPORT	O-GEN MISC	4,000.00_
				TOTAL:	4,000.00
ECHO GROUP INC	11/21/14	BATTERY TESTER	RECREATION	PARK AREAS	42.90
	11/21/14	STEP LADDER-CAL	ECONOMIC DEV AUTHO	TRAINING/TESTING CENTE	260.00
	11/21/14	DUCT SEAL	ELECTRIC	M-DISTR UNDERGRND LINE	14.58
	11/21/14	UTILITY KNIFE	ELECTRIC	M-DISTR UNDERGRND LINE	46.21_
				TOTAL:	363.69
EZ-WASH	11/21/14	CAR WASHES	GENERAL FUND	POLICE ADMINISTRATION	116.00

VENDOR SORT KEY	DATE	DESCRIPTION	FUND	DEPARTMENT	AMOUNT_
				TOTAL:	116.00
FASTENAL COMPANY	11/21/14	PARTS/SUPPLIES	GENERAL FUND	PAVED STREETS	48.91
	11/21/14	SUPPLIES	GENERAL FUND	PAVED STREETS	77.05
	11/21/14	PLOW LIGHTS	GENERAL FUND	ICE AND SNOW REMOVAL	0.37
	11/21/14	PARTS	GENERAL FUND	ICE AND SNOW REMOVAL	158.26
	11/21/14	DUST MASKS	RECREATION	PARK AREAS	13.28
	11/21/14	KEY	STORM WATER MANAGE	STREET CLEANING	0.95_
				TOTAL:	298.82
FERGUSON MARY	11/21/14	GENERAL ELECTION JUDGE	GENERAL FUND	ELECTIONS	135.00_
				TOTAL:	135.00
FIFE WATER SERVICES INC	11/21/14	CHEMICALS	INDUSTRIAL WASTEWA	O-PURIFY MISC	9,412.20_
				TOTAL:	9,412.20
FINANCE AND COMMERCE	11/21/14	K-MART BIDS	GENERAL FUND	ECONOMIC DEVELOPMENT	193.14_
				TOTAL:	193.14
FLAHERTY & HOOD PA	11/21/14	LABOR/EMPLOYMENT CONSULT	GENERAL FUND	CITY ATTORNEY	316.73_
				TOTAL:	316.73
FLATHERS PAT	11/21/14	GENERAL ELECTION JUDGE	GENERAL FUND	ELECTIONS	162.00_
				TOTAL:	162.00
GAZETTE-TRIBUNE	11/21/14	SASSY SATURDAY	LIQUOR	O-GEN MISC	48.00_
				TOTAL:	48.00
GRAHAM TIRE OF WORTHINGTON INC	11/21/14	TIRE REPAIR	RECREATION	PARK AREAS	30.00
	11/21/14	TIRE	RECREATION	PARK AREAS	18.56
	11/21/14	SERVICE CALL, TIRE REPAIR	RECREATION	PARK AREAS	54.80
	11/21/14	SERVICE CALL, TIRE REPAIR	RECREATION	PARK AREAS	2.00
	11/21/14	MULE REPAIRS	RECREATION	PARK AREAS	71.14
	11/21/14	TIRES ON AIRPORT TRACTOR #	AIRPORT	O-GEN MISC	1,861.04_
				TOTAL:	2,037.54
GROENDYKE BOTTEM-WINTERS JUNE	11/21/14	GENERAL ELECTION	GENERAL FUND	ELECTIONS	135.00_
				TOTAL:	135.00
HABICHT BETH	11/21/14	GENERAL ELECTION JUDGE	GENERAL FUND	ELECTIONS	157.50_
				TOTAL:	157.50
HACH COMPANY	11/21/14	LAB CHEMICALS	WATER	O-PURIFY MISC	112.34_
				TOTAL:	112.34
HAGEN BEVERAGE DISTRIBUTING INC	11/21/14	BEER	LIQUOR	NON-DEPARTMENTAL	3,938.90
	11/21/14	BEER	LIQUOR	NON-DEPARTMENTAL	16.00-
	11/21/14	BEER	LIQUOR	NON-DEPARTMENTAL	541.60
	11/21/14	MIX	LIQUOR	NON-DEPARTMENTAL	68.00
	11/21/14	BEER	LIQUOR	NON-DEPARTMENTAL	5,217.00
	11/21/14	MIX	LIQUOR	NON-DEPARTMENTAL	45.00
	11/21/14	BEER	LIQUOR	NON-DEPARTMENTAL	1,362.00
	11/21/14	BEER	LIQUOR	NON-DEPARTMENTAL	6,092.80
	11/21/14	BEER	LIQUOR	NON-DEPARTMENTAL	770.85
	11/21/14	BEER	LIQUOR	NON-DEPARTMENTAL	2,549.90
	11/21/14	BEER	LIQUOR	NON-DEPARTMENTAL	6,899.05

VENDOR SORT KEY	DATE	DESCRIPTION	FUND	DEPARTMENT	AMOUNT_
	11/21/14	MIX	LIQUOR	NON-DEPARTMENTAL	136.00
	11/21/14	WATER	LIQUOR	O-GEN MISC	12.00
				TOTAL:	27,617.10
HALE, DEE	11/21/14	GENERAL ELECTION JUDGE	GENERAL FUND	ELECTIONS	139.50
				TOTAL:	139.50
HARBERTS KATHY	11/21/14	GENERAL ELECTION JUDGE	GENERAL FUND	ELECTIONS	153.00
				TOTAL:	153.00
RODNEY D HARVEY	11/21/14	PARK LANE PARKING LOT SIGN	GENERAL FUND	SIGNS AND SIGNALS	500.00
				TOTAL:	500.00
HARVEYS UPHOLSTERY	11/21/14	SEW PATCHES	GENERAL FUND	POLICE ADMINISTRATION	12.50
				TOTAL:	12.50
HAY ELAINE	11/21/14	GENERAL ELECTION JUDGE	GENERAL FUND	ELECTIONS	135.00
				TOTAL:	135.00
HD SUPPLY WATERWORKS	11/21/14	SERVICE LINE PARTS	WATER	O-DIST UNDERGRND LINES	104.46
				TOTAL:	104.46
HENDERSON SHARON	11/21/14	GENERAL ELECTION JUDGE	GENERAL FUND	ELECTIONS	144.00
				TOTAL:	144.00
HOFFMAN ALICE	11/21/14	GENERAL ELECTION JUDGE	GENERAL FUND	ELECTIONS	139.50
				TOTAL:	139.50
HOPE HAVEN INC	11/21/14	BAC CLEANING	ECONOMIC DEV AUTHO	TRAINING/TESTING CENTE	601.30
				TOTAL:	601.30
HY-VEE INC-61705	11/21/14	RETIREMENT PARTY	GENERAL FUND	MAYOR AND COUNCIL	159.88
	11/21/14	RECEPTION	GENERAL FUND	MAYOR AND COUNCIL	49.99
	11/21/14	GAS	LIQUOR	O-GEN MISC	30.99
	11/21/14	GAS	LIQUOR	O-GEN MISC	26.00
				TOTAL:	266.86
HYDRO KLEAN	11/21/14	SERVICE	INDUSTRIAL WASTEWA	O-PURIFY MISC	2,463.00
				TOTAL:	2,463.00
I & S GROUP INC	11/21/14	GRAND AVE EXTENSION	IMPROVEMENT CONST	GRAND AVE N	3,000.00
				TOTAL:	3,000.00
IDE@S	11/21/14	SUBSTATION SWITCH	ELECTRIC	O-DISTR STATION EXPENS	102.99
				TOTAL:	102.99
IDEAL LANDSCAPE & DESIGN INC	11/21/14	GRASS SEED FOR STUMPS	RECREATION	TREE REMOVAL	125.00
				TOTAL:	125.00
INFRARED SERVICES	11/21/14	INFRARED INSPECTION/ANALYS	ELECTRIC	CUSTOMER INSTALL EXPEN	2,779.45
				TOTAL:	2,779.45
INGENTHRON PAT	11/21/14	GENERAL ELECTION JUDGE	GENERAL FUND	ELECTIONS	139.50
				TOTAL:	139.50
INTEGRITY AVIATION INC	11/21/14	FBO MANAGEMENT FEE-OCTOBER AIRPORT		O-GEN MISC	1,995.00

VENDOR SORT KEY	DATE	DESCRIPTION	FUND	DEPARTMENT	AMOUNT_
				TOTAL:	1,995.00
INTERNATIONAL CODE COUNCIL INC	11/21/14	MEMBER DUES	GENERAL FUND	ECONOMIC DEVELOPMENT	125.00_
				TOTAL:	125.00
INTL UNION LOCAL #49	11/21/14	UNION DUES	GENERAL FUND	NON-DEPARTMENTAL	43.86
	11/21/14	UNION DUES	GENERAL FUND	NON-DEPARTMENTAL	82.98
	11/21/14	UNION DUES	RECREATION	NON-DEPARTMENTAL	50.30
	11/21/14	UNION DUES	RECREATION	NON-DEPARTMENTAL	49.50
	11/21/14	UNION DUES	IMPROVEMENT CONST	NON-DEPARTMENTAL	5.90
	11/21/14	UNION DUES	IMPROVEMENT CONST	NON-DEPARTMENTAL	5.40
	11/21/14	UNION DUES	WATER	NON-DEPARTMENTAL	87.40
	11/21/14	UNION DUES	WATER	NON-DEPARTMENTAL	84.29
	11/21/14	UNION DUES	MUNICIPAL WASTEWAT	NON-DEPARTMENTAL	116.24
	11/21/14	UNION DUES	MUNICIPAL WASTEWAT	NON-DEPARTMENTAL	115.36
	11/21/14	UNION DUES	STORM WATER MANAGE	NON-DEPARTMENTAL	42.80
	11/21/14	UNION DUES	STORM WATER MANAGE	NON-DEPARTMENTAL	8.97_
				TOTAL:	693.00
IOWA INFORMATION INC	11/21/14	AD DISCOVER NOBLES	LIQUOR	O-GEN MISC	69.95_
				TOTAL:	69.95
J & K WINDOWS	11/21/14	WINDOW CLEANING	LIQUOR	O-GEN MISC	32.06_
				TOTAL:	32.06
JANSSEN, NORMA	11/21/14	GENERAL ELECTION JUDGE	GENERAL FUND	ELECTIONS	198.00_
				TOTAL:	198.00
JAYCOX IMPLEMENT INC	11/21/14	SANDER PARTS	GENERAL FUND	ICE AND SNOW REMOVAL	38.42
	11/21/14	PARTS FOR PLOW HITCH	GENERAL FUND	ICE AND SNOW REMOVAL	53.22
	11/21/14	SNOW PLOW PARTS	RECREATION	PARK AREAS	19.50_
				TOTAL:	111.14
JBS USA	11/21/14	3RD QTR SETTLEMENT	INDUSTRIAL WASTEWA	ADMIN MISC	59,074.80_
				TOTAL:	59,074.80
JEFFERSON FIRE & SAFETY INC	11/21/14	HIP BOOTS	WATER	O-DISTR MISC	186.31_
				TOTAL:	186.31
JEPPESSEN GRAVEL	11/21/14	STUMP DIRT	RECREATION	TREE REMOVAL	720.00_
				TOTAL:	720.00
JERRY'S AUTO SUPPLY	11/21/14	HOSES, ENDS	GENERAL FUND	PAVED STREETS	112.42
	11/21/14	PARTS	GENERAL FUND	PAVED STREETS	0.59
	11/21/14	PARTS FOR TRUCK #409	GENERAL FUND	PAVED STREETS	73.47
	11/21/14	WIPER BLADES, LAMP	GENERAL FUND	PAVED STREETS	36.27
	11/21/14	OIL DRY	GENERAL FUND	ICE AND SNOW REMOVAL	15.98
	11/21/14	BELT FOR KUBOTA	RECREATION	PARK AREAS	24.56
	11/21/14	OIL DRY, SWEEPING COMPOUND	RECREATION	PARK AREAS	93.89
	11/21/14	COUPLER	ELECTRIC	O-DISTR UNDERGRND LINE	10.49_
				TOTAL:	367.67
JOBSHQ	11/21/14	ON-LINE EMPLOYMENT ADS-ACC	GENERAL FUND	PERSONNEL & RECRUITMEN	620.80
	11/21/14	ON-LINE EMPLOYMENT ADS-LIQ	GENERAL FUND	PERSONNEL & RECRUITMEN	250.20_
				TOTAL:	871.00

VENDOR SORT KEY	DATE	DESCRIPTION	FUND	DEPARTMENT	AMOUNT_
JOHANSEN SHARON	11/21/14	GENERAL ELECTION JUDGE	GENERAL FUND	ELECTIONS	135.00_
				TOTAL:	135.00
JOHNSON BROTHERS LIQUOR CO	11/21/14	WINE	LIQUOR	NON-DEPARTMENTAL	76.01-
	11/21/14	LIQUOR	LIQUOR	NON-DEPARTMENTAL	3,556.48
	11/21/14	WINE	LIQUOR	NON-DEPARTMENTAL	3,865.15
	11/21/14	LIQUOR	LIQUOR	NON-DEPARTMENTAL	146.00-
	11/21/14	LIQUOR	LIQUOR	NON-DEPARTMENTAL	148.24-
	11/21/14	WINE	LIQUOR	NON-DEPARTMENTAL	34.00-
	11/21/14	LIQUOR	LIQUOR	NON-DEPARTMENTAL	3,567.87
	11/21/14	WINE	LIQUOR	NON-DEPARTMENTAL	4,126.75
	11/21/14	BEER	LIQUOR	NON-DEPARTMENTAL	62.97
	11/21/14	LIQUOR	LIQUOR	O-SOURCE MISC	77.06
	11/21/14	FREIGHT	LIQUOR	O-SOURCE MISC	108.73
	11/21/14	FREIGHT	LIQUOR	O-SOURCE MISC	1.66-
	11/21/14	FREIGHT	LIQUOR	O-SOURCE MISC	3.32-
	11/21/14	FREIGHT	LIQUOR	O-SOURCE MISC	55.61
	11/21/14	FEIGHT	LIQUOR	O-SOURCE MISC	139.44_
				TOTAL:	15,150.83
KIRBY SALES	11/21/14	BAGS	LIQUOR	O-GEN MISC	28.86_
				TOTAL:	28.86
KM GRAPHICS	11/21/14	TECHNOLOGY MANUALS-DHS GRA	GENERAL FUND	CENTER FOR ACTIVE LIVI	60.00_
				TOTAL:	60.00
LABOR AND INDUSTRY	11/21/14	AIR TANK TESTING	RECREATION	GOLF COURSE-GREEN	10.00
	11/21/14	FILTER PLANT COMPRESSOR	WATER	O-DISTR MISC	10.00_
				TOTAL:	20.00
LAFFRENZEN JAMES	11/21/14	GENERAL ELECTION JUDGE	GENERAL FUND	ELECTIONS	162.00_
				TOTAL:	162.00
LAMBERT EVELYN	11/21/14	GENERAL ELECTION JUDGE	GENERAL FUND	ELECTIONS	135.00_
				TOTAL:	135.00
LAMPERTS YARDS INC-2602004	11/21/14	ORCHARD KNOLL BENCH	RECREATION	PARK AREAS	11.25_
				TOTAL:	11.25
LARSON CRANE SERVICE INC	11/21/14	2014 SEWER/WATER RECON #5	WATER	NON-DEPARTMENTAL	3,393.73
	11/21/14	2014 SEWER/WATER RECON #5	WATER	PROJECT #5	2,231.00
	11/21/14	2014 SEWER/WATER RECON #5	MUNICIPAL WASTEWAT	NON-DEPARTMENTAL	2,615.27_
				TOTAL:	8,240.00
LAVELLE MARCY	11/21/14	GENERAL ELECTION JUDGE	GENERAL FUND	ELECTIONS	135.00_
				TOTAL:	135.00
LAW ENF LABOR SERV INC #4	11/21/14	UNION DUES	GENERAL FUND	NON-DEPARTMENTAL	472.50
	11/21/14	UNION DUES	GENERAL FUND	NON-DEPARTMENTAL	472.50_
				TOTAL:	945.00
LAWNS PLUS	11/21/14	MOWING 10/14	MEMORIAL AUDITORIUM	MEMORIAL AUDITORIUM	60.00_
				TOTAL:	60.00
LEAGUE OF MN CITIES INSURANCE TRUST	11/21/14	INSURANCE SETTLEMENT	SAFETY PROMO/LOSS	HEALTH/SAFETY/FITNESS	1,364.35_
				TOTAL:	1,364.35

VENDOR SORT KEY	DATE	DESCRIPTION	FUND	DEPARTMENT	AMOUNT_
LEVINE BURT	11/21/14	GENERAL ELECTION JUDGE	GENERAL FUND	ELECTIONS	135.00_
				TOTAL:	135.00
LINDEMANN LINDA	11/21/14	GENERAL ELECTION JUDGE	GENERAL FUND	ELECTIONS	153.00_
				TOTAL:	153.00
LOCATORS & SUPPLIES INC	11/21/14	WORK GLOVES	ELECTRIC	O-DISTR MISC	93.66_
				TOTAL:	93.66
MALTERS SHEPHERD & VON HOLTUM	11/21/14	LEGAL FEES	GENERAL FUND	CITY ATTORNEY	2,030.00
	11/21/14	LEGAL FEES	GENERAL FUND	CITY ATTORNEY	48.00
	11/21/14	LEGAL FEES	GENERAL FUND	CITY ATTORNEY	40.00
	11/21/14	LEGAL FEES	GENERAL FUND	CITY ATTORNEY	160.00
	11/21/14	LEAGL FEES	GENERAL FUND	CITY ATTORNEY	200.00
	11/21/14	LEGAL FEES	GENERAL FUND	CITY ATTORNEY	256.00
	11/21/14	LEGAL FEES	GENERAL FUND	CITY ATTORNEY	596.50
	11/21/14	LEGAL FEES	ELECTRIC	PROFESSIONAL SERVICES	80.00_
				TOTAL:	3,410.50
MAMMEN CORRINE	11/21/14	GENERAL ELECTION JUDGE	GENERAL FUND	ELECTIONS	135.00_
				TOTAL:	135.00
MARCO	11/21/14	COPIER SERVICE SHARP/MX-35	GENERAL FUND	ENGINEERING ADMIN	36.61
	11/21/14	COPIER SERVICE SHARP/MX-35	GENERAL FUND	ECONOMIC DEVELOPMENT	36.62
	11/21/14	COPIER SERVICE SHARP/AR-M4	GENERAL FUND	SECURITY CENTER	40.64
	11/21/14	COPIER SERVICE SHARP/AR-M4	GENERAL FUND	SECURITY CENTER	40.65
	11/21/14	COPIER SERVICE SHARP/MX-62	DATA PROCESSING	COPIER/FAX	255.33_
				TOTAL:	409.85
MARKS TOWING & REPAIR OF WORTHINGTON I	11/21/14	TOW	GENERAL FUND	CODE ENFORCEMENT	150.00_
				TOTAL:	150.00
MARSH GLENIS	11/21/14	GENERAL ELECTION JUDGE	GENERAL FUND	ELECTIONS	135.00_
				TOTAL:	135.00
MARTHALER CHEVROLET OF WORTHINGTON	11/21/14	PARTS SQUAD 37	GENERAL FUND	POLICE ADMINISTRATION	70.64_
				TOTAL:	70.64
MC LAUGHLIN & SCHULZ INC	11/21/14	REPAIRS	GENERAL FUND	PAVED STREETS	111.72
	11/21/14	STREET REPAIRS	GENERAL FUND	PAVED STREETS	597.28
	11/21/14	REPAIRS	GENERAL FUND	PAVED STREETS	1,243.88
	11/21/14	SIDEWALK REPAIRS	WATER	O-DIST UNDERGRND LINES	36.00
	11/21/14	SHELL, MORNINGSIDE REPAIRS	WATER	M-TRANS MAINS	162.00_
				TOTAL:	2,150.88
MCCUEN, JOSHUA W	11/21/14	T2D CONFERENCE	GENERAL FUND	POLICE ADMINISTRATION	78.00
	11/21/14	T2D CONFERENCE	GENERAL FUND	POLICE ADMINISTRATION	91.37_
				TOTAL:	169.37
MEDIACOM	11/21/14	HSI	GENERAL FUND	PAVED STREETS	69.95_
				TOTAL:	69.95
MINNESOTA BENEFIT ASSOCIATION	11/21/14	MN BENEFITS	GENERAL FUND	NON-DEPARTMENTAL	56.50
	11/21/14	MN BENEFITS	GENERAL FUND	NON-DEPARTMENTAL	56.50
	11/21/14	MN BENEFITS	GENERAL FUND	NON-DEPARTMENTAL	31.57
	11/21/14	MN BENEFITS	GENERAL FUND	NON-DEPARTMENTAL	37.76

VENDOR SORT KEY	DATE	DESCRIPTION	FUND	DEPARTMENT	AMOUNT_
	11/21/14	INSURANCE	GENERAL FUND	ACCOUNTING	469.74
	11/21/14	INSURANCE	GENERAL FUND	PAVED STREETS	53.17
	11/21/14	INSURANCE	GENERAL FUND	PUBLIC WORK SHOP	140.17
	11/21/14	INSURANCE	GENERAL FUND	CODE ENFORCEMENT	193.34
	11/21/14	MN BENEFITS	RECREATION	NON-DEPARTMENTAL	41.84
	11/21/14	MN BENEFITS	RECREATION	NON-DEPARTMENTAL	41.84
	11/21/14	MN BENEFITS	RECREATION	NON-DEPARTMENTAL	17.87
	11/21/14	MN BENEFITS	RECREATION	NON-DEPARTMENTAL	17.87
	11/21/14	INSURANCE	RECREATION	PARK AREAS	0.01
	11/21/14	MN BENEFITS	WATER	NON-DEPARTMENTAL	13.21
	11/21/14	MN BENEFITS	WATER	NON-DEPARTMENTAL	13.21
	11/21/14	INSURANCE	WATER	O-PUMPING	27.05
	11/21/14	INSURANCE	WATER	O-PURIFY LABOR	55.80
	11/21/14	INSURANCE	WATER	O-DISTR MISC	110.48
	11/21/14	INSURANCE	WATER	GENERAL ADMIN	32.08
	11/21/14	MN BENEFITS	MUNICIPAL WASTEWAT	NON-DEPARTMENTAL	17.26
	11/21/14	MN BENEFITS	MUNICIPAL WASTEWAT	NON-DEPARTMENTAL	17.62
	11/21/14	MN BENEFITS	MUNICIPAL WASTEWAT	NON-DEPARTMENTAL	86.14
	11/21/14	MN BENEFITS	MUNICIPAL WASTEWAT	NON-DEPARTMENTAL	86.48
	11/21/14	INSURANCE	MUNICIPAL WASTEWAT	O-PURIFY LABOR	96.92
	11/21/14	INSURANCE	MUNICIPAL WASTEWAT	M-PURIFY EQUIPMENT	96.92
	11/21/14	INSURANCE	MUNICIPAL WASTEWAT	GENERAL ADMIN	25.66
	11/21/14	MN BENEFITS	ELECTRIC	NON-DEPARTMENTAL	37.22
	11/21/14	MN BENEFITS	ELECTRIC	NON-DEPARTMENTAL	37.22
	11/21/14	MN BENEFITS	ELECTRIC	NON-DEPARTMENTAL	2.92
	11/21/14	MN BENEFITS	ELECTRIC	NON-DEPARTMENTAL	2.92
	11/21/14	INSURANCE	ELECTRIC	O-SOURCE SUPER & ENG	9.76
	11/21/14	INSURANCE	ELECTRIC	O-DISTR SUPER & ENG	175.66
	11/21/14	INSURANCE	ELECTRIC	M-SOURCE SUPER & ENF	9.76
	11/21/14	INSURANCE	ELECTRIC	GENERAL ADMIN	156.10
	11/21/14	MN BENEFITS	STORM WATER MANAGE	NON-DEPARTMENTAL	1.49
	11/21/14	MN BENEFITS	STORM WATER MANAGE	NON-DEPARTMENTAL	1.13
	11/21/14	MN BENEFITS	STORM WATER MANAGE	NON-DEPARTMENTAL	12.87
	11/21/14	MN BENEFITS	STORM WATER MANAGE	NON-DEPARTMENTAL	6.34
	11/21/14	INSURANCE	STORM WATER MANAGE	STORM DRAINAGE	0.01
	11/21/14	MN BENEFITS	LIQUOR	NON-DEPARTMENTAL	25.55
	11/21/14	MN BENEFITS	LIQUOR	NON-DEPARTMENTAL	25.55
	11/21/14	INSURANCE	DATA PROCESSING	DATA PROCESSING	80.34
			TOTAL:		2,421.85
MINNESOTA DEPARTMENT OF HEALTH	11/21/14	2015 OLSON PARK LICENSE	RECREATION	OLSON PARK CAMPGROUND	532.40
			TOTAL:		532.40
MINNESOTA ENERGY RESOURCES CORP	11/21/14	GAS SERVICE	GENERAL FUND	PAVED STREETS	27.38
	11/21/14	GAS SERVICE	GENERAL FUND	PAVED STREETS	47.79
	11/21/14	GAS SERVICE	RECREATION	PARK AREAS	16.86
	11/21/14	GAS SERVICE	RECREATION	PARK AREAS	18.55
	11/21/14	GAS SERVICE	WATER	O-DISTR MISC	27.37
	11/21/14	GAS SERVICE	WATER	O-DISTR MISC	22.94
	11/21/14	GAS SERVICE	MUNICIPAL WASTEWAT	O-SOURCE MAINS & LIFTS	9.10
	11/21/14	GAS SERVICE	ELECTRIC	O-DISTR MISC	29.25
	11/21/14	GAS SERVICE	ELECTRIC	O-DISTR MISC	26.56
	11/21/14	GAS SERVICE	LIQUOR	O-GEN MISC	102.17
	11/21/14	GAS SERVICE	MEMORIAL AUDITORIUM	MEMORIAL AUDITORIUM	1,015.00
			TOTAL:		1,342.97

VENDOR SORT KEY	DATE	DESCRIPTION	FUND	DEPARTMENT	AMOUNT_
MISCELLANEOUS V AREVALO SONIA	11/21/14	CUSTOMER REBATE	ELECTRIC	CUSTOMER INSTALL EXPEN	150.00
CORREA CABRERA GREYCHE	11/21/14	REFUND OF DEPOSITS-ACCTS F	WATER	NON-DEPARTMENTAL	16.42
CORREA CABRERA GREYCHE	11/21/14	REFUND OF DEPOSITS-ACCTS F	WATER	ACCTS-RECORDS & COLLEC	0.02
CORREA CABRERA GREYCHE	11/21/14	REFUND OF DEPOSITS-ACCTS F	ELECTRIC	NON-DEPARTMENTAL	95.00
CORREA CABRERA GREYCHE	11/21/14	REFUND OF DEPOSITS-ACCTS F	ELECTRIC	ACCTS-RECORDS & COLLEC	0.04
GARCIA BENJAMIN	11/21/14	REFUND OF DEPOSITS-ACCTS F	WATER	NON-DEPARTMENTAL	8.43
GARCIA BENJAMIN	11/21/14	REFUND OF DEPOSITS-ACCTS F	WATER	ACCTS-RECORDS & COLLEC	0.04
GARCIA BENJAMIN	11/21/14	REFUND OF DEPOSITS-ACCTS F	ELECTRIC	NON-DEPARTMENTAL	95.00
GARCIA BENJAMIN	11/21/14	REFUND OF DEPOSITS-ACCTS F	ELECTRIC	ACCTS-RECORDS & COLLEC	0.08
GERBER DARYL	11/21/14	REFUND OF CREDITS-ACCTS FI	GENERAL FUND	NON-DEPARTMENTAL	21.69
GERBER DARYL	11/21/14	REFUND OF CREDITS-ACCTS FI	ELECTRIC	NON-DEPARTMENTAL	0.29
GERBER DARYL	11/21/14	REFUND OF CREDITS-ACCTS FI	GARBAGE COLLECTION	NON-DEPARTMENTAL	44.46
MIDSTATES BUILDERS	11/21/14	REFUND R&R CONCRETE RETAIN	GENERAL FUND	NON-DEPARTMENTAL	900.00
RODRIGUEZ JR, FRANK	11/21/14	REFUND OF DEPOSITS-ACCTS F	ELECTRIC	NON-DEPARTMENTAL	12.43
RODRIGUEZ JR, FRANK	11/21/14	REFUND OF DEPOSITS-ACCTS F	ELECTRIC	ACCTS-RECORDS & COLLEC	0.06
SANCHEZ MAURO Z	11/21/14	REFUND OF DEPOSITS-ACCTS F	ELECTRIC	NON-DEPARTMENTAL	187.85
SANCHEZ MAURO Z	11/21/14	REFUND OF DEPOSITS-ACCTS F	ELECTRIC	ACCTS-RECORDS & COLLEC	0.18
SOUPHOMMANICHANH PHONE	11/21/14	REFUND OF DEPOSITS-ACCTS F	ELECTRIC	NON-DEPARTMENTAL	85.86
SOUPHOMMANICHANH PHONE	11/21/14	REFUND OF DEPOSITS-ACCTS F	ELECTRIC	ACCTS-RECORDS & COLLEC	0.10
				TOTAL:	1,617.95
MN CHILD SUPPORT PAYMENT CTR	11/21/14	GARNISHMENT	GENERAL FUND	NON-DEPARTMENTAL	461.46
	11/21/14	GARNISHMENT	WATER	NON-DEPARTMENTAL	294.46
				TOTAL:	755.92
MSCIC	11/21/14	CONFERENCE REGISTRATION	PD TASK FORCE	BUFFALO RIDGE DRUG TAS	375.00
				TOTAL:	375.00
MTI DISTRIBUTING INC	11/21/14	PRESSURE TRANSDUCER	RECREATION	GOLF COURSE-GREEN	434.90
				TOTAL:	434.90
MURRAY COUNTY SHERIFFS OFFICE	11/21/14	3RD QTR REIMBURSEMENT	PD TASK FORCE	BUFFALO RIDGE DRUG TAS	12,029.65
				TOTAL:	12,029.65
NAGEL, JACOBA	11/21/14	GENERAL ELECTION JUDGE	GENERAL FUND	ELECTIONS	148.50
				TOTAL:	148.50
NALCO COMPANY	11/21/14	PHOSPHATE	WATER	O-PURIFY	4,892.55
				TOTAL:	4,892.55
NATIONAL CHILD SAFETY COUNCIL	11/21/14	EDUCATIONAL MATERIALS	GENERAL FUND	POLICE ADMINISTRATION	450.00
				TOTAL:	450.00
NCPERS MINNESOTA 851801	11/21/14	LIFE INS	GENERAL FUND	NON-DEPARTMENTAL	108.64
	11/21/14	LIFE INS	GENERAL FUND	NON-DEPARTMENTAL	111.59
	11/21/14	NOVEMBER FOR DECEMBER FARA	GENERAL FUND	NON-DEPARTMENTAL	16.00
	11/21/14	LIFE INS	RECREATION	NON-DEPARTMENTAL	24.39
	11/21/14	LIFE INS	RECREATION	NON-DEPARTMENTAL	24.00
	11/21/14	LIFE INS	PIR/TRUNKS	NON-DEPARTMENTAL	3.45
	11/21/14	LIFE INS	PIR/TRUNKS	NON-DEPARTMENTAL	3.60
	11/21/14	LIFE INS	IMPROVEMENT CONST	NON-DEPARTMENTAL	3.21
	11/21/14	LIFE INS	IMPROVEMENT CONST	NON-DEPARTMENTAL	2.62
	11/21/14	LIFE INS	WATER	NON-DEPARTMENTAL	19.58
	11/21/14	LIFE INS	WATER	NON-DEPARTMENTAL	18.14
	11/21/14	LIFE INS	MUNICIPAL WASTEWAT	NON-DEPARTMENTAL	26.12
	11/21/14	LIFE INS	MUNICIPAL WASTEWAT	NON-DEPARTMENTAL	25.68

VENDOR SORT KEY	DATE	DESCRIPTION	FUND	DEPARTMENT	AMOUNT_
	11/21/14	LIFE INS	ELECTRIC	NON-DEPARTMENTAL	21.84
	11/21/14	LIFE INS	ELECTRIC	NON-DEPARTMENTAL	21.79
	11/21/14	LIFE INS	STORM WATER MANAGE	NON-DEPARTMENTAL	0.77
	11/21/14	LIFE INS	STORM WATER MANAGE	NON-DEPARTMENTAL	0.58
	11/21/14	LIFE INS	LIQUOR	NON-DEPARTMENTAL	16.00
	11/21/14	LIFE INS	LIQUOR	NON-DEPARTMENTAL	16.00
	11/21/14	LIFE INS	DATA PROCESSING	NON-DEPARTMENTAL	8.00
	11/21/14	LIFE INS	DATA PROCESSING	NON-DEPARTMENTAL	8.00_
				TOTAL:	480.00
NELSON LINDA	11/21/14	GENERAL ELECTION JUDGE	GENERAL FUND	ELECTIONS	153.00_
				TOTAL:	153.00
NEREM ROSIE	11/21/14	GENERAL ELECTION JUDGE	GENERAL FUND	ELECTIONS	144.00_
				TOTAL:	144.00
NEW VISION CO-OP	11/21/14	GRASS SEED	ELECTRIC	M-DISTR UNDERGRND LINE	30.30_
				TOTAL:	30.30
NOBLES COOPERATIVE ELECTRIC	11/21/14	RANGE ELECTRICITY	GENERAL FUND	SECURITY CENTER	7.95
	11/21/14	RANGE ELECTRICITY	GENERAL FUND	SECURITY CENTER	7.95
	11/21/14	ELECTRICITY	RECREATION	GOLF COURSE-CLUBHOUSE	493.74
	11/21/14	ELECTRICITY	RECREATION	GOLF COURSE-GREEN	44.75
	11/21/14	ELECTRICITY	RECREATION	GOLF COURSE-GREEN	1,213.29
	11/21/14	ELECTRICITY	RECREATION	GOLF COURSE-GREEN	479.74
	11/21/14	ELECTRICITY	WATER	O-PUMPING	15.00
	11/21/14	ELECTRICITY	WATER	O-PUMPING	15.00
	11/21/14	ELECTRICITY	AIRPORT	O-GEN MISC	39.06_
				TOTAL:	2,316.48
NOBLES COUNTY ATTORNEY	11/21/14	SEIZED PROPERTY-MIRANDA	GENERAL FUND	POLICE ADMINISTRATION	52.80_
				TOTAL:	52.80
NOBLES COUNTY AUDITOR/TREASURER	11/21/14	LEASE PAYMENT UTILITIES	WATER	O-DISTR RENTS	149.32
	11/21/14	LEASE PAYMENT UTILITIES	WATER	ADMIN RENT	298.64
	11/21/14	LEASE PAYMENT UTILITIES	MUNICIPAL WASTEWAT	O-PURIFY MISC	119.45
	11/21/14	LEASE PAYMENT UTILITIES	MUNICIPAL WASTEWAT	ADMIN RENT	238.91
	11/21/14	LEASE PAYMENT UTILITIES	ELECTRIC	O-DISTR RENTS	716.73
	11/21/14	LEASE PAYMENT UTILITIES	ELECTRIC	ADMIN RENT	1,463.31_
				TOTAL:	2,986.36
NOBLES COUNTY SHERIFF	11/21/14	3RD QTR REIMBURSEMENT	PD TASK FORCE	BUFFALO RIDGE DRUG TAS	12,029.65_
				TOTAL:	12,029.65
OLD DOMINION BRUSH	11/21/14	CONVEYOR BELT	STORM WATER MANAGE	STREET CLEANING	757.97
	11/21/14	COVER CHAIN WELD	STORM WATER MANAGE	STREET CLEANING	194.36_
				TOTAL:	952.33
OLSON MARJ	11/21/14	GENERAL ELECTION JUDGE	GENERAL FUND	ELECTIONS	135.00_
				TOTAL:	135.00
OXFORD AUTOMOTIVE EXTERIORS LLC	11/21/14	REPAIR SQUAD 35	GENERAL FUND	POLICE ADMINISTRATION	135.00_
				TOTAL:	135.00
PAUSTIS & SONS	11/21/14	WINE	LIQUOR	NON-DEPARTMENTAL	660.00
	11/21/14	LIQUOR	LIQUOR	NON-DEPARTMENTAL	1,275.62

VENDOR SORT KEY	DATE	DESCRIPTION	FUND	DEPARTMENT	AMOUNT_
	11/21/14	WINE	LIQUOR	NON-DEPARTMENTAL	1,366.00
	11/21/14	FREIGHT	LIQUOR	O-SOURCE MISC	8.75
	11/21/14	FREIGHT	LIQUOR	O-SOURCE MISC	11.25
	11/21/14	FREIGHT	LIQUOR	O-SOURCE MISC	15.00
				TOTAL:	3,336.62
PEER ENGINEERING INC	11/21/14	KMART SITE-DEMO PLANS & SP	GENERAL FUND	ECONOMIC DEVELOPMENT	2,000.00
				TOTAL:	2,000.00
MN PEIP	11/21/14	HEALTH INS PREMIUM	GENERAL FUND	NON-DEPARTMENTAL	5,689.80
	11/21/14	HEALTH INS PREMIUM	GENERAL FUND	NON-DEPARTMENTAL	6,132.13
	11/21/14	NOV FOR DEC INSURANCE	GENERAL FUND	NON-DEPARTMENTAL	1,635.24
	11/21/14	HEALTH INS ADMIN	GENERAL FUND	MAYOR AND COUNCIL	1,709.76
	11/21/14	HEALTH INS ADMIN	GENERAL FUND	MAYOR AND COUNCIL	1,698.54
	11/21/14	HEALTH INS ADMIN	GENERAL FUND	CLERK'S OFFICE	854.88
	11/21/14	HEALTH INS ADMIN	GENERAL FUND	CLERK'S OFFICE	854.88
	11/21/14	HEALTH INS ADMIN	GENERAL FUND	ENGINEERING ADMIN	1,332.58
	11/21/14	HEALTH INS ADMIN	GENERAL FUND	ENGINEERING ADMIN	1,761.07
	11/21/14	HEALTH INS ADMIN	GENERAL FUND	ECONOMIC DEVELOPMENT	1,113.36
	11/21/14	HEALTH INS ADMIN	GENERAL FUND	ECONOMIC DEVELOPMENT	1,113.36
	11/21/14	HEALTH INS ADMIN	GENERAL FUND	GENERAL GOVT BUILDINGS	141.64
	11/21/14	HEALTH INS ADMIN	GENERAL FUND	GENERAL GOVT BUILDINGS	141.64
	11/21/14	HEALTH INS ADMIN	GENERAL FUND	POLICE ADMINISTRATION	7,988.96
	11/21/14	HEALTH INS ADMIN	GENERAL FUND	POLICE ADMINISTRATION	8,648.34
	11/21/14	HEALTH INS ADMIN	GENERAL FUND	REGULATE LAWFUL GAMBLE	27.38
	11/21/14	HEALTH INS ADMIN	GENERAL FUND	SECURITY CENTER	1,614.69
	11/21/14	HEALTH INS ADMIN	GENERAL FUND	SECURITY CENTER	1,614.68
	11/21/14	HEALTH INS ADMIN	GENERAL FUND	SECURITY CENTER	1,614.68
	11/21/14	HEALTH INS ADMIN	GENERAL FUND	SECURITY CENTER	1,614.69
	11/21/14	HEALTH INS ADMIN	GENERAL FUND	ANIMAL CONTROL ENFORCE	171.69
	11/21/14	HEALTH INS ADMIN	GENERAL FUND	ANIMAL CONTROL ENFORCE	171.69
	11/21/14	HEALTH INS ADMIN	GENERAL FUND	PAVED STREETS	851.53
	11/21/14	HEALTH INS ADMIN	GENERAL FUND	PAVED STREETS	1,257.51
	11/21/14	HEALTH INS ADMIN	GENERAL FUND	PUBLIC WORK SHOP	313.91
	11/21/14	HEALTH INS ADMIN	GENERAL FUND	PUBLIC WORK SHOP	528.18
	11/21/14	HEALTH INS ADMIN	GENERAL FUND	ICE AND SNOW REMOVAL	111.09
	11/21/14	HEALTH INS ADMIN	GENERAL FUND	CENTER FOR ACTIVE LIVI	30.05
	11/21/14	HEALTH INS ADMIN	GENERAL FUND	CENTER FOR ACTIVE LIVI	30.05
	11/21/14	HEALTH INS ADMIN	GENERAL FUND	MISC SPECIAL DAYS/EVEN	172.00
	11/21/14	HEALTH INS PREMIUM	RECREATION	NON-DEPARTMENTAL	1,072.24
	11/21/14	HEALTH INS PREMIUM	RECREATION	NON-DEPARTMENTAL	1,061.57
	11/21/14	HEALTH INS ADMIN	RECREATION	GOLF COURSE-GREEN	343.38
	11/21/14	HEALTH INS ADMIN	RECREATION	GOLF COURSE-GREEN	343.38
	11/21/14	HEALTH INS ADMIN	RECREATION	PARK AREAS	2,046.00
	11/21/14	HEALTH INS ADMIN	RECREATION	PARK AREAS	31.09
	11/21/14	HEALTH INS ADMIN	RECREATION	PARK AREAS	2,046.00
	11/21/14	HEALTH INS PREMIUM	PIR/TRUNKS	NON-DEPARTMENTAL	121.40
	11/21/14	HEALTH INS PREMIUM	PIR/TRUNKS	NON-DEPARTMENTAL	126.68
	11/21/14	HEALTH INS ADMIN	PIR/TRUNKS	SP ASSESS-ADMIN ESCROW	220.58
	11/21/14	HEALTH INS ADMIN	PIR/TRUNKS	SP ASSESS-ADMIN ESCROW	230.17
	11/21/14	HEALTH INS PREMIUM	IMPROVEMENT CONST	NON-DEPARTMENTAL	119.75
	11/21/14	HEALTH INS PREMIUM	IMPROVEMENT CONST	NON-DEPARTMENTAL	73.00
	11/21/14	HEALTH INS ADMIN	IMPROVEMENT CONST	OVERLAY PROGRAM	6.39
	11/21/14	HEALTH INS ADMIN	IMPROVEMENT CONST	D\48439	140.66
	11/21/14	HEALTH INS ADMIN	IMPROVEMENT CONST	10TH ST 1ST AVE TO 9TH	22.38
	11/21/14	HEALTH INS ADMIN	IMPROVEMENT CONST	SHADY LANE-ORCHARD TO	175.27

VENDOR SORT KEY	DATE	DESCRIPTION	FUND	DEPARTMENT	AMOUNT_
	11/21/14	HEALTH INS ADMIN	IMPROVEMENT CONST	SHADY LANE-ORCHARD TO	118.00
	11/21/14	HEALTH INS ADMIN	IMPROVEMENT CONST	GRAND AVE N	69.14
	11/21/14	HEALTH INS ADMIN	IMPROVEMENT CONST	GRAND AVE N	22.38
	11/21/14	HEALTH INS ADMIN	IMPROVEMENT CONST	GRAND AVE N CATCH BASI	9.98
	11/21/14	HEALTH INS ADMIN	IMPROVEMENT CONST	OKABENA ST WATER MAIN	17.99
	11/21/14	HEALTH INS ADMIN	IMPROVEMENT CONST	OKABENA ST WATER MAIN	68.69
	11/21/14	HEALTH INS PREMIUM	WATER	NON-DEPARTMENTAL	479.59
	11/21/14	HEALTH INS PREMIUM	WATER	NON-DEPARTMENTAL	371.18
	11/21/14	HEALTH INS ADMIN	WATER	O-SOURCE WELLS & SPRNG	6.86
	11/21/14	HEALTH INS ADMIN	WATER	O-PUMPING	49.38
	11/21/14	HEALTH INS ADMIN	WATER	O-PUMPING	93.39
	11/21/14	HEALTH INS ADMIN	WATER	O-PURIFY LABOR	74.96
	11/21/14	HEALTH INS ADMIN	WATER	O-PURIFY LABOR	155.30
	11/21/14	HEALTH INS ADMIN	WATER	O-DISTR SUPER AND ENG	343.38
	11/21/14	HEALTH INS ADMIN	WATER	O-DISTR SUPER AND ENG	343.38
	11/21/14	HEALTH INS ADMIN	WATER	O-DIST UNDERGRND LINES	834.97
	11/21/14	HEALTH INS ADMIN	WATER	O-DIST UNDERGRND LINES	575.80
	11/21/14	HEALTH INS ADMIN	WATER	O-DISTR MISC	312.40
	11/21/14	HEALTH INS ADMIN	WATER	O-DISTR MISC	324.91
	11/21/14	HEALTH INS ADMIN	WATER	M-TRANS MAINS	273.48
	11/21/14	HEALTH INS ADMIN	WATER	M-TRANS MAINS	316.15
	11/21/14	HEALTH INS ADMIN	WATER	M-TRANS HYDRANTS	79.64
	11/21/14	HEALTH INS ADMIN	WATER	GENERAL ADMIN	76.73
	11/21/14	HEALTH INS ADMIN	WATER	GENERAL ADMIN	72.61
	11/21/14	HEALTH INS ADMIN	WATER	ADMIN OFFICE SUPPLIES	1.72
	11/21/14	HEALTH INS ADMIN	WATER	ADMIN MISC	2.81
	11/21/14	HEALTH INS ADMIN	WATER	ACCTS-METER READING	147.61
	11/21/14	HEALTH INS ADMIN	WATER	ACCTS-RECORDS & COLLEC	160.21
	11/21/14	HEALTH INS ADMIN	WATER	ACCTS-RECORDS & COLLEC	160.19
	11/21/14	HEALTH INS ADMIN	WATER	PROJECT #3	29.16
	11/21/14	HEALTH INS ADMIN	WATER	PROJECT #3	19.18
	11/21/14	HEALTH INS ADMIN	WATER	PROJECT #4	37.49
	11/21/14	HEALTH INS ADMIN	WATER	PROJECT #4	23.86
	11/21/14	HEALTH INS ADMIN	WATER	PROJECT #5	149.24
	11/21/14	HEALTH INS ADMIN	WATER	PROJECT #5	63.48
	11/21/14	HEALTH INS PREMIUM	MUNICIPAL WASTEWAT	NON-DEPARTMENTAL	967.73
	11/21/14	HEALTH INS PREMIUM	MUNICIPAL WASTEWAT	NON-DEPARTMENTAL	932.58
	11/21/14	HEALTH INS ADMIN	MUNICIPAL WASTEWAT	O-SOURCE SUPERVISION	153.45
	11/21/14	HEALTH INS ADMIN	MUNICIPAL WASTEWAT	O-SOURCE SUPERVISION	153.45
	11/21/14	HEALTH INS ADMIN	MUNICIPAL WASTEWAT	O-SOURCE MAINS & LIFTS	72.57
	11/21/14	HEALTH INS ADMIN	MUNICIPAL WASTEWAT	O-SOURCE MAINS & LIFTS	105.95
	11/21/14	HEALTH INS ADMIN	MUNICIPAL WASTEWAT	O-PURIFY SUPERVISION	358.05
	11/21/14	HEALTH INS ADMIN	MUNICIPAL WASTEWAT	O-PURIFY SUPERVISION	358.05
	11/21/14	HEALTH INS ADMIN	MUNICIPAL WASTEWAT	O-PURIFY LABOR	531.09
	11/21/14	HEALTH INS ADMIN	MUNICIPAL WASTEWAT	O-PURIFY LABOR	567.08
	11/21/14	HEALTH INS ADMIN	MUNICIPAL WASTEWAT	O-PURIFY LABORATORY	526.17
	11/21/14	HEALTH INS ADMIN	MUNICIPAL WASTEWAT	O-PURIFY LABORATORY	531.70
	11/21/14	HEALTH INS ADMIN	MUNICIPAL WASTEWAT	O-PURIFY MISC	25.58
	11/21/14	HEALTH INS ADMIN	MUNICIPAL WASTEWAT	O-PURIFY MISC	25.58
	11/21/14	HEALTH INS ADMIN	MUNICIPAL WASTEWAT	M-SOURCE MAINS & LIFTS	648.82
	11/21/14	HEALTH INS ADMIN	MUNICIPAL WASTEWAT	M-SOURCE MAINS & LIFTS	526.81
	11/21/14	HEALTH INS ADMIN	MUNICIPAL WASTEWAT	M-PURIFY EQUIPMENT	628.29
	11/21/14	HEALTH INS ADMIN	MUNICIPAL WASTEWAT	M-PURIFY EQUIPMENT	651.90
	11/21/14	HEALTH INS ADMIN	MUNICIPAL WASTEWAT	GENERAL ADMIN	61.38
	11/21/14	HEALTH INS ADMIN	MUNICIPAL WASTEWAT	GENERAL ADMIN	58.09
	11/21/14	HEALTH INS ADMIN	MUNICIPAL WASTEWAT	ADMIN OFFICE SUPPLIES	1.72

VENDOR SORT KEY	DATE	DESCRIPTION	FUND	DEPARTMENT	AMOUNT_
	11/21/14	HEALTH INS ADMIN	MUNICIPAL WASTEWAT	PROFESSIONAL SERVICES	51.15
	11/21/14	HEALTH INS ADMIN	MUNICIPAL WASTEWAT	ADMIN MISC	2.81
	11/21/14	HEALTH INS ADMIN	MUNICIPAL WASTEWAT	ACCT-RECORDS & COLLECT	134.56
	11/21/14	HEALTH INS ADMIN	MUNICIPAL WASTEWAT	ACCT-RECORDS & COLLECT	134.56
	11/21/14	HEALTH INS ADMIN	MUNICIPAL WASTEWAT	PROJECT #2	6.39
	11/21/14	HEALTH INS ADMIN	MUNICIPAL WASTEWAT	PROJECT #3	41.07
	11/21/14	HEALTH INS ADMIN	MUNICIPAL WASTEWAT	PROJECT #3	35.99
	11/21/14	HEALTH INS ADMIN	MUNICIPAL WASTEWAT	PROJECT #4	12.79
	11/21/14	HEALTH INS ADMIN	MUNICIPAL WASTEWAT	PROJECT #7	37.49
	11/21/14	HEALTH INS ADMIN	MUNICIPAL WASTEWAT	PROJECT #7	17.46
	11/21/14	HEALTH INS ADMIN	MUNICIPAL WASTEWAT	PROJECT #12	21.37
	11/21/14	HEALTH INS PREMIUM	ELECTRIC	NON-DEPARTMENTAL	924.91
	11/21/14	HEALTH INS PREMIUM	ELECTRIC	NON-DEPARTMENTAL	1,005.82
	11/21/14	NOV FOR DEC INSURANCE	ELECTRIC	NON-DEPARTMENTAL	449.26
	11/21/14	HEALTH INS ADMIN	ELECTRIC	O-DISTR MISC	513.12
	11/21/14	HEALTH INS ADMIN	ELECTRIC	O-DISTR MISC	527.64
	11/21/14	HEALTH INS ADMIN	ELECTRIC	M-DISTR UNDERGRND LINE	44.69
	11/21/14	HEALTH INS ADMIN	ELECTRIC	M-DISTR ST LITE & SIG	80.02
	11/21/14	HEALTH INS ADMIN	ELECTRIC	M-DISTR ST LITE & SIG	72.98
	11/21/14	HEALTH INS ADMIN	ELECTRIC	GENERAL ADMIN	373.39
	11/21/14	HEALTH INS ADMIN	ELECTRIC	GENERAL ADMIN	353.34
	11/21/14	HEALTH INS ADMIN	ELECTRIC	ADMIN OFFICE SUPPLIES	17.16
	11/21/14	HEALTH INS ADMIN	ELECTRIC	ADMIN MISC	5.60
	11/21/14	HEALTH INS ADMIN	ELECTRIC	ACCTS-METER READING	162.45
	11/21/14	HEALTH INS ADMIN	ELECTRIC	ACCTS-METER READING	107.97
	11/21/14	HEALTH INS ADMIN	ELECTRIC	ACCTS-RECORDS & COLLEC	675.20
	11/21/14	HEALTH INS ADMIN	ELECTRIC	ACCTS-RECORDS & COLLEC	675.22
	11/21/14	HEALTH INS ADMIN	ELECTRIC	ACCTS-ASSISTANCE	255.74
	11/21/14	HEALTH INS ADMIN	ELECTRIC	ACCTS-ASSISTANCE	255.74
	11/21/14	HEALTH INS ADMIN	ELECTRIC	FA DISTR UNDRGRND COND	1,172.73
	11/21/14	HEALTH INS ADMIN	ELECTRIC	FA DISTR UNDRGRND COND	1,246.05
	11/21/14	HEALTH INS ADMIN	ELECTRIC	FA DISTR UNDRGRND COND	165.98
	11/21/14	HEALTH INS PREMIUM	INDUSTRIAL WASTEWA	NON-DEPARTMENTAL	4.22
	11/21/14	HEALTH INS ADMIN	INDUSTRIAL WASTEWA	PROJECT #13	31.97
	11/21/14	HEALTH INS PREMIUM	STORM WATER MANAGE	NON-DEPARTMENTAL	359.08
	11/21/14	HEALTH INS PREMIUM	STORM WATER MANAGE	NON-DEPARTMENTAL	42.37
	11/21/14	HEALTH INS ADMIN	STORM WATER MANAGE	STORM DRAINAGE	373.09
	11/21/14	HEALTH INS ADMIN	STORM WATER MANAGE	STORM DRAINAGE	89.81
	11/21/14	HEALTH INS ADMIN	STORM WATER MANAGE	STREET CLEANING	685.10
	11/21/14	HEALTH INS ADMIN	STORM WATER MANAGE	STREET CLEANING	126.91
	11/21/14	HEALTH INS ADMIN	STORM WATER MANAGE	PROJECT #2	25.57
	11/21/14	HEALTH INS ADMIN	STORM WATER MANAGE	PROJECT #12	37.49
	11/21/14	HEALTH INS ADMIN	STORM WATER MANAGE	PROJECT #12	39.09
	11/21/14	HEALTH INS ADMIN	STORM WATER MANAGE	PROJECT #25	37.47
	11/21/14	HEALTH INS ADMIN	STORM WATER MANAGE	PROJECT #25	17.47
	11/21/14	HEALTH INS ADMIN	LIQUOR	O-GEN MISC	1,030.14
	11/21/14	HEALTH INS ADMIN	LIQUOR	O-GEN MISC	1,030.14
	11/21/14	HEALTH INS PREMIUM	AIRPORT	NON-DEPARTMENTAL	47.89
	11/21/14	HEALTH INS PREMIUM	AIRPORT	NON-DEPARTMENTAL	32.84
	11/21/14	HEALTH INS ADMIN	AIRPORT	O-GEN MISC	31.97
	11/21/14	HEALTH INS ADMIN	AIRPORT	O-GEN MISC	25.57
	11/21/14	HEALTH INS ADMIN	AIRPORT	TAXI B CRACK REPAIRS	25.57
	11/21/14	HEALTH INS ADMIN	AIRPORT	PROJECT #11	6.39
	11/21/14	HEALTH INS PREMIUM	DATA PROCESSING	NON-DEPARTMENTAL	281.50
	11/21/14	HEALTH INS PREMIUM	DATA PROCESSING	NON-DEPARTMENTAL	281.50
	11/21/14	HEALTH INS ADMIN	DATA PROCESSING	DATA PROCESSING	854.88

VENDOR SORT KEY	DATE	DESCRIPTION	FUND	DEPARTMENT	AMOUNT_
	11/21/14	HEALTH INS ADMIN	DATA PROCESSING	DATA PROCESSING	1,541.64
	11/21/14	MALMQUIST COBRA	HEALTH INS PLAN (T	NON-DEPARTMENTAL	686.76
	11/21/14	GRIFFITH COBRA	HEALTH INS PLAN (T	NON-DEPARTMENTAL	686.76_
				TOTAL:	90,905.06
PEPSI COLA BOTTLING CO	11/21/14	MIX	LIQUOR	NON-DEPARTMENTAL	144.75
	11/21/14	MIX	LIQUOR	NON-DEPARTMENTAL	70.00
	11/21/14	MIX	LIQUOR	NON-DEPARTMENTAL	174.75
	11/21/14	MIX	LIQUOR	NON-DEPARTMENTAL	54.00
	11/21/14	MIX	LIQUOR	NON-DEPARTMENTAL	72.84
	11/21/14	MIX	LIQUOR	NON-DEPARTMENTAL	54.00_
				TOTAL:	570.34
PHILLIPS WINE & SPIRITS INC	11/21/14	LIQUOR	LIQUOR	NON-DEPARTMENTAL	2,991.53
	11/21/14	WINE	LIQUOR	NON-DEPARTMENTAL	1,739.98
	11/21/14	LIQUOR	LIQUOR	NON-DEPARTMENTAL	9,416.91
	11/21/14	WINE	LIQUOR	NON-DEPARTMENTAL	2,165.82
	11/21/14	FREIGHT	LIQUOR	O-SOURCE MISC	58.38
	11/21/14	FREIGHT	LIQUOR	O-SOURCE MISC	57.68
	11/21/14	FREIGHT	LIQUOR	O-SOURCE MISC	186.75
	11/21/14	FREIGHT	LIQUOR	O-SOURCE MISC	49.80_
				TOTAL:	16,666.85
PIPESTONE COUNTY SHERIFF OFFICE	11/21/14	3RD QTR REIMBURSEMENT	PD TASK FORCE	BUFFALO RIDGE DRUG TAS	12,029.65_
				TOTAL:	12,029.65
PRAIRIE LAND TREES INC	11/21/14	TREES	GENERAL FUND	FIRE ADMINISTRATION	2,970.00_
				TOTAL:	2,970.00
PROMO 4 U	11/21/14	2015 CALENDARS	LIQUOR	O-GEN MISC	165.79_
				TOTAL:	165.79
RACOM CORP	11/21/14	PAGER BATTERY	GENERAL FUND	FIRE ADMINISTRATION	28.00_
				TOTAL:	28.00
REEVES KELLY	11/21/14	GENERAL ELECTION JUDGE	GENERAL FUND	ELECTIONS	150.75_
				TOTAL:	150.75
REKER KATHY	11/21/14	GENERAL ELECTION JUDGE	GENERAL FUND	ELECTIONS	135.00_
				TOTAL:	135.00
RESICO INC	11/21/14	BOX PAD-15KV TRANSFORMER	ELECTRIC	FA DISTR UNDRGRND COND	1,071.58_
				TOTAL:	1,071.58
RICKERS	11/21/14	GROUP SESSION	GENERAL FUND	POLICE ADMINISTRATION	149.99_
				TOTAL:	149.99
RILEY MARK	11/21/14	K9 TRAINING	GENERAL FUND	POLICE ADMINISTRATION	44.29
	11/21/14	K9 TRAINING	GENERAL FUND	POLICE ADMINISTRATION	195.00
	11/21/14	TENNIS BALLS	GENERAL FUND	POLICE ADMINISTRATION	9.36
	11/21/14	K9 TRAINING	GENERAL FUND	POLICE ADMINISTRATION	93.63
	11/21/14	K9 TRAINING	GENERAL FUND	POLICE ADMINISTRATION	195.00_
				TOTAL:	537.28
ROGERS LAURENCE	11/21/14	ARMER TRAINING	GENERAL FUND	POLICE ADMINISTRATION	15.01
	11/21/14	ARMER TRAINING	GENERAL FUND	POLICE ADMINISTRATION	197.75

VENDOR SORT KEY	DATE	DESCRIPTION	FUND	DEPARTMENT	AMOUNT_
				TOTAL:	212.76
RONS REPAIR INC	11/21/14	LIGHT BAR SKIDLOADER	RECREATION	PARK AREAS	247.05_
				TOTAL:	247.05
ROSLANSKY KATHY	11/21/14	GENERAL ELECTION JUDGE	GENERAL FUND	ELECTIONS	135.00_
				TOTAL:	135.00
RUNNINGS SUPPLY INC-ACCT#9502485	11/21/14	LIGHT BULBS	GENERAL FUND	GENERAL GOVT BUILDINGS	12.49
	11/21/14	LONG TAPER, COUPLERS	GENERAL FUND	PAVED STREETS	132.95
	11/21/14	GLOVES	GENERAL FUND	PAVED STREETS	84.95
	11/21/14	GLOVES	GENERAL FUND	PAVED STREETS	16.99
	11/21/14	FLASHLIGHT, MAGLITE	GENERAL FUND	PAVED STREETS	35.77
	11/21/14	ICE MELT	GENERAL FUND	CENTER FOR ACTIVE LIVI	9.99
	11/21/14	CABLE TIES- 10TH ST WRAPS	GENERAL FUND	MISC SPECIAL DAYS/EVEN	26.99
	11/21/14	TORO NUTS, BOLTS	RECREATION	PARK AREAS	20.91
	11/21/14	SNOW BLOWER PARTS	RECREATION	PARK AREAS	59.72
	11/21/14	GLOVES	RECREATION	PARK AREAS	67.96_
				TOTAL:	468.72
SANFORD HEALTH	11/21/14	EMPLOYEE PHYSICAL	SAFETY PROMO/LOSS	HEALTH/SAFETY/FITNESS	203.00_
				TOTAL:	203.00
SCHERFF CAROL	11/21/14	GENERAL ELECTION JUDGE	GENERAL FUND	ELECTIONS	72.00_
				TOTAL:	72.00
SCHWALBACH ACE HARDWARE-5930	11/21/14	COUPLING	GENERAL FUND	PAVED STREETS	7.98
	11/21/14	OLSON PARK THERMOSTAT	RECREATION	OLSON PARK CAMPGROUND	25.99
	11/21/14	BAC -TOILET VALVE REPAIR	ECONOMIC DEV AUTHO	TRAINING/TESTING CENTE	102.75_
				TOTAL:	136.72
SCHWALBACH ACE #6067	11/21/14	HOSE CLAMPS	ELECTRIC	O-DISTR MISC	55.80_
				TOTAL:	55.80
SECURE BENEFITS SYSTEMS CORP	11/21/14	ADMIN FEE	GENERAL FUND	NON-DEPARTMENTAL	54.05
	11/21/14	ADMIN FEE	GENERAL FUND	NON-DEPARTMENTAL	58.78
	11/21/14	CHILD CARE	GENERAL FUND	NON-DEPARTMENTAL	746.36
	11/21/14	CHILD CARE	GENERAL FUND	NON-DEPARTMENTAL	787.51
	11/21/14	UNREIMBURSED MEDICAL	GENERAL FUND	NON-DEPARTMENTAL	1,700.14
	11/21/14	UNREIMBURSED MEDICAL	GENERAL FUND	NON-DEPARTMENTAL	1,804.34
	11/21/14	RE-ENROLLMENT	GENERAL FUND	OTHER GEN GOVT MISC	282.00
	11/21/14	MONTHLY ADMIN FEE	GENERAL FUND	OTHER GEN GOVT MISC	20.00
	11/21/14	ADMIN FEE	RECREATION	NON-DEPARTMENTAL	11.28
	11/21/14	ADMIN FEE	RECREATION	NON-DEPARTMENTAL	11.25
	11/21/14	CHILD CARE	RECREATION	NON-DEPARTMENTAL	40.00
	11/21/14	CHILD CARE	RECREATION	NON-DEPARTMENTAL	40.00
	11/21/14	UNREIMBURSED MEDICAL	RECREATION	NON-DEPARTMENTAL	334.03
	11/21/14	UNREIMBURSED MEDICAL	RECREATION	NON-DEPARTMENTAL	333.30
	11/21/14	ADMIN FEE	IMPROVEMENT CONST	NON-DEPARTMENTAL	1.02
	11/21/14	ADMIN FEE	IMPROVEMENT CONST	NON-DEPARTMENTAL	0.21
	11/21/14	UNREIMBURSED MEDICAL	IMPROVEMENT CONST	NON-DEPARTMENTAL	28.75
	11/21/14	UNREIMBURSED MEDICAL	IMPROVEMENT CONST	NON-DEPARTMENTAL	5.47
	11/21/14	ADMIN FEE	WATER	NON-DEPARTMENTAL	9.88
	11/21/14	ADMIN FEE	WATER	NON-DEPARTMENTAL	9.83
	11/21/14	UNREIMBURSED MEDICAL	WATER	NON-DEPARTMENTAL	263.58
	11/21/14	UNREIMBURSED MEDICAL	WATER	NON-DEPARTMENTAL	262.12

VENDOR SORT KEY	DATE	DESCRIPTION	FUND	DEPARTMENT	AMOUNT_
	11/21/14	ADMIN FEE	MUNICIPAL WASTEWAT	NON-DEPARTMENTAL	10.14
	11/21/14	ADMIN FEE	MUNICIPAL WASTEWAT	NON-DEPARTMENTAL	9.66
	11/21/14	UNREIMBURSED MEDICAL	MUNICIPAL WASTEWAT	NON-DEPARTMENTAL	332.58
	11/21/14	UNREIMBURSED MEDICAL	MUNICIPAL WASTEWAT	NON-DEPARTMENTAL	317.69
	11/21/14	ADMIN FEE	ELECTRIC	NON-DEPARTMENTAL	3.38
	11/21/14	ADMIN FEE	ELECTRIC	NON-DEPARTMENTAL	3.38
	11/21/14	UNREIMBURSED MEDICAL	ELECTRIC	NON-DEPARTMENTAL	135.47
	11/21/14	UNREIMBURSED MEDICAL	ELECTRIC	NON-DEPARTMENTAL	135.47
	11/21/14	ADMIN FEE	INDUSTRIAL WASTEWA	NON-DEPARTMENTAL	0.14
	11/21/14	UNREIMBURSED MEDICAL	INDUSTRIAL WASTEWA	NON-DEPARTMENTAL	3.65
	11/21/14	ADMIN FEE	STORM WATER MANAGE	NON-DEPARTMENTAL	4.61
	11/21/14	ADMIN FEE	STORM WATER MANAGE	NON-DEPARTMENTAL	1.25
	11/21/14	CHILD CARE	STORM WATER MANAGE	NON-DEPARTMENTAL	41.15
	11/21/14	UNREIMBURSED MEDICAL	STORM WATER MANAGE	NON-DEPARTMENTAL	115.77
	11/21/14	UNREIMBURSED MEDICAL	STORM WATER MANAGE	NON-DEPARTMENTAL	53.18
	11/21/14	ADMIN FEE	LIQUOR	NON-DEPARTMENTAL	6.75
	11/21/14	ADMIN FEE	LIQUOR	NON-DEPARTMENTAL	6.75
	11/21/14	UNREIMBURSED MEDICAL	LIQUOR	NON-DEPARTMENTAL	130.83
	11/21/14	UNREIMBURSED MEDICAL	LIQUOR	NON-DEPARTMENTAL	130.83
	11/21/14	ADMIN FEE	AIRPORT	NON-DEPARTMENTAL	0.14
	11/21/14	UNREIMBURSED MEDICAL	AIRPORT	NON-DEPARTMENTAL	4.90
	11/21/14	ADMIN FEE	DATA PROCESSING	NON-DEPARTMENTAL	4.50
	11/21/14	ADMIN FEE	DATA PROCESSING	NON-DEPARTMENTAL	4.50
	11/21/14	UNREIMBURSED MEDICAL	DATA PROCESSING	NON-DEPARTMENTAL	187.49
	11/21/14	UNREIMBURSED MEDICAL	DATA PROCESSING	NON-DEPARTMENTAL	187.49
				TOTAL:	8,635.60
SERVALL TOWEL & LINEN SUPPLY	11/21/14	GRANIT MATS, BAR SWIPES	LIQUOR	O-GEN MISC	71.96
				TOTAL:	71.96
SHEPHERD MARCIA	11/21/14	GENERAL ELECTION JUDGE	GENERAL FUND	ELECTIONS	153.00
				TOTAL:	153.00
SHORT ELLIOTT HENDRICKSON INC	11/21/14	STORM SEWER LIFT STATION	STORM WATER MANAGE	PROJECT #2	6,503.05
				TOTAL:	6,503.05
SNIPERCRAFT	11/21/14	TARGETS, DATA BOOK	GENERAL FUND	POLICE ADMINISTRATION	100.00
				TOTAL:	100.00
SOUTHERN WINE & SPIRITS OF MINNESOTA	11/21/14	LIQUOR	LIQUOR	NON-DEPARTMENTAL	194.90
	11/21/14	LIQUOR	LIQUOR	NON-DEPARTMENTAL	2,440.86
	11/21/14	MIX	LIQUOR	NON-DEPARTMENTAL	60.57
	11/21/14	WINE	LIQUOR	NON-DEPARTMENTAL	1,986.60
	11/21/14	LIQUOR	LIQUOR	NON-DEPARTMENTAL	3,386.99
	11/21/14	WINE	LIQUOR	NON-DEPARTMENTAL	192.00
	11/21/14	FREIGHT	LIQUOR	O-SOURCE MISC	3.69
	11/21/14	FREIGHT	LIQUOR	O-SOURCE MISC	3.70
	11/21/14	FREIGHT	LIQUOR	O-SOURCE MISC	48.13
	11/21/14	FREIGHT	LIQUOR	O-SOURCE MISC	1.85
	11/21/14	FREIGHT	LIQUOR	O-SOURCE MISC	70.30
	11/21/14	FREIGHT	LIQUOR	O-SOURCE MISC	82.01
	11/21/14	FREIGHT	LIQUOR	O-SOURCE MISC	3.70
				TOTAL:	8,475.30
SOUTHWEST MINNESOTA HOUSING PARTNERSHI	11/21/14	CDAP-12-0071-O-FY13 #17	SMALL CITIES GRANT	SW MN HOUSING	17,750.00
				TOTAL:	17,750.00

VENDOR SORT KEY	DATE	DESCRIPTION	FUND	DEPARTMENT	AMOUNT_
SOUTHWESTERN MENTAL HEALTH CENTER INC	11/21/14	EAP SESSIONS	GENERAL FUND	OTHER GEN GOVT MISC	36.83
	11/21/14	EAP SESSIONS	GENERAL FUND	OTHER GEN GOVT MISC	36.83
	11/21/14	EAP SESSIONS	RECREATION	GOLF COURSE-GREEN	0.72
	11/21/14	EAP SESSIONS	RECREATION	GOLF COURSE-GREEN	0.72
	11/21/14	EAP SESSIONS	RECREATION	PARK AREAS	2.89
	11/21/14	EAP SESSIONS	RECREATION	PARK AREAS	2.89
	11/21/14	EAP SESSIONS	WATER	EMPLOYEE PENS & BENEFI	4.33
	11/21/14	EAP SESSIONS	WATER	EMPLOYEE PENS & BENEFI	4.33
	11/21/14	EAP SESSIONS	MUNICIPAL WASTEWAT	O-PURIFY MISC	5.78
	11/21/14	EAP SESSIONS	MUNICIPAL WASTEWAT	O-PURIFY MISC	5.78
	11/21/14	EAP SESSIONS	ELECTRIC	EMPLOYEE PENS & BENEFI	8.67
	11/21/14	EAP SESSIONS	ELECTRIC	EMPLOYEE PENS & BENEFI	8.67
	11/21/14	EAP SESSIONS	LIQUOR	O-GEN MISC	2.17
	11/21/14	EAP SESSIONS	LIQUOR	O-GEN MISC	2.17
	11/21/14	EAP SESSIONS	AIRPORT	O-GEN MISC	2.17
	11/21/14	EAP SESSIONS	AIRPORT	O-GEN MISC	2.17
	11/21/14	EAP SESSIONS	DATA PROCESSING	DATA PROCESSING	1.44
	11/21/14	EAP SESSIONS	DATA PROCESSING	DATA PROCESSING	1.44
				TOTAL:	130.00
TATE CORKY	11/21/14	GENERAL ELECTION JUDGE	GENERAL FUND	ELECTIONS	135.00_
				TOTAL:	135.00
TATE, GINNY	11/21/14	GENERAL ELECTION JUDGE	GENERAL FUND	ELECTIONS	135.00_
				TOTAL:	135.00
THOMSON REUTERS - WEST	11/21/14	OCTOBER CLEAR	GENERAL FUND	POLICE ADMINISTRATION	154.17_
				TOTAL:	154.17
TRI-STATE RENTAL CENTER	11/21/14	CONCRETE PLANER	GENERAL FUND	PAVED STREETS	175.00_
				TOTAL:	175.00
TURFWERKS	11/21/14	BALL JOINT	RECREATION	GOLF COURSE-GREEN	49.62_
				TOTAL:	49.62
UNITED PARCEL SERVICE	11/21/14	INTERNET SHIPPING CHARGES	ELECTRIC	O-DISTR MISC	15.80_
				TOTAL:	15.80
VANDEN BOSCH NELMA	11/21/14	GENERAL ELECTION JUDGE	GENERAL FUND	ELECTIONS	162.00_
				TOTAL:	162.00
VANTAGEPOINT TRANSFER AGENTS-457	11/21/14	DEFERRED COMP	GENERAL FUND	NON-DEPARTMENTAL	62.00_
				TOTAL:	62.00
VERBRUGGE VERN	11/21/14	GENERAL ELECTION JUDGE	GENERAL FUND	ELECTIONS	139.50_
				TOTAL:	139.50
VERIZON WIRELESS	11/21/14	DATA LINES	PD TASK FORCE	BUFFALO RIDGE DRUG TAS	61.35_
				TOTAL:	61.35
VINOCOPIA INC	11/21/14	WINE	LIQUOR	NON-DEPARTMENTAL	128.00
	11/21/14	MIX	LIQUOR	NON-DEPARTMENTAL	40.00
	11/21/14	LIQUOR	LIQUOR	NON-DEPARTMENTAL	99.25_
				TOTAL:	267.25
VIP FLORAL	11/21/14	WINTERIZE EVENT CENTER	IRR EVENT CENTER	EVENT CENTER	125.00

VENDOR SORT KEY	DATE	DESCRIPTION	FUND	DEPARTMENT	AMOUNT
				TOTAL:	125.00
WAL MART BUSINESS/SYNCB	11/21/14	SMALL TOOLS	WATER	O-DIST UNDERGRND LINES	43.57
	11/21/14	SUPPLIES	WATER	O-DISTR MISC	23.54
				TOTAL:	67.11
WEITGENANT ROSE	11/21/14	GENERAL ELECTION JUDGE	GENERAL FUND	ELECTIONS	139.50
				TOTAL:	139.50
WENDLAND SELLERS BROMELAND PA	11/21/14	LEGAL FEES	IMPROVEMENT CONST	TH 59 N IMPROVEMENTS	165.00
				TOTAL:	165.00
WESCO RECEIVABLES CORP	11/21/14	STRESS CONE-15KV CABLE	ELECTRIC	FA DISTR UNDRGRND COND	593.16
				TOTAL:	593.16
WIEME SHIRLEY	11/21/14	GENERAL ELECTION JUDGE	GENERAL FUND	ELECTIONS	135.00
				TOTAL:	135.00
WIESE CAROLE	11/21/14	GENERAL ELECTION JUDGE	GENERAL FUND	ELECTIONS	135.00
				TOTAL:	135.00
WINE MERCHANTS	11/21/14	WINE	LIQUOR	NON-DEPARTMENTAL	696.00
	11/21/14	FREIGHT	LIQUOR	O-SOURCE MISC	8.30
				TOTAL:	704.30
CHARLES WINTER	11/21/14	GENERAL ELECTION JUDGE	GENERAL FUND	ELECTIONS	162.00
				TOTAL:	162.00
WINTER MARY ANN	11/21/14	GENERAL ELECTION JUDGE	GENERAL FUND	ELECTIONS	159.75
				TOTAL:	159.75
WIRTZ BEVERAGE MINNESOTA WINE & SPIRIT	11/21/14	BEER	LIQUOR	NON-DEPARTMENTAL	46.10
	11/21/14	LIQUOR	LIQUOR	NON-DEPARTMENTAL	11,641.62
	11/21/14	LIQUOR	LIQUOR	NON-DEPARTMENTAL	316.41
	11/21/14	LIQUOR	LIQUOR	NON-DEPARTMENTAL	2,707.71
	11/21/14	MIX	LIQUOR	NON-DEPARTMENTAL	94.42
	11/21/14	WINE	LIQUOR	NON-DEPARTMENTAL	1,803.50
	11/21/14	LIQUOR	LIQUOR	NON-DEPARTMENTAL	6,236.39
	11/21/14	MIX	LIQUOR	NON-DEPARTMENTAL	59.13
	11/21/14	WINE	LIQUOR	NON-DEPARTMENTAL	72.00
	11/21/14	FREIGHT	LIQUOR	O-SOURCE MISC	122.38
	11/21/14	FREIGHT	LIQUOR	O-SOURCE MISC	5.92
	11/21/14	FREIGHT	LIQUOR	O-SOURCE MISC	38.66
	11/21/14	FREIGHT	LIQUOR	O-SOURCE MISC	28.05
	11/21/14	FREIGHT	LIQUOR	O-SOURCE MISC	98.90
	11/21/14	FREIGHT	LIQUOR	O-SOURCE MISC	3.30
				TOTAL:	23,274.49
WORTHINGTON AREA UNITED WAY	11/21/14	PAYROLL WITHHOLDING	GENERAL FUND	NON-DEPARTMENTAL	12.00
	11/21/14	PAYROLL WITHHOLDING	GENERAL FUND	NON-DEPARTMENTAL	12.00
	11/21/14	PAYROLL WITHHOLDING	RECREATION	NON-DEPARTMENTAL	4.00
	11/21/14	PAYROLL WITHHOLDING	RECREATION	NON-DEPARTMENTAL	4.00
				TOTAL:	32.00
WORTHINGTON AUTO SUPPLY	11/21/14	BATTERY FOR SQUAD 33	GENERAL FUND	POLICE ADMINISTRATION	105.96
				TOTAL:	105.96

VENDOR SORT KEY	DATE	DESCRIPTION	FUND	DEPARTMENT	AMOUNT_
WORTHINGTON ELECTRIC INC	11/21/14	PRESSURE WASHER SWITCHES	GENERAL FUND	FIRE ADMINISTRATION	153.59
	11/21/14	DRU INSTALL	ELECTRIC	FA DISTR METERS	73.18_
				TOTAL:	226.77
WORTHINGTON FOOTWEAR	11/21/14	BOOTS	GENERAL FUND	PAVED STREETS	200.00
	11/21/14	BOOTS	RECREATION	PARK AREAS	140.00_
				TOTAL:	340.00
YMCA	11/21/14	2014 CONTRACT PAYMENT	RECREATION	RECREATION PROGRAMS	3,750.00_
				TOTAL:	3,750.00

===== FUND TOTALS =====

101	GENERAL FUND	90,594.73
204	SMALL CITIES GRANT	17,750.00
207	PD TASK FORCE	36,525.30
214	EVENT CENTER	125.00
229	RECREATION	17,602.61
231	ECONOMIC DEV AUTHORITY	964.05
321	PIR/TRUNKS	705.88
401	IMPROVEMENT CONST	4,061.21
601	WATER	19,652.74
602	MUNICIPAL WASTEWATER	12,873.44
604	ELECTRIC	25,716.84
605	INDUSTRIAL WASTEWATER	126,980.55
606	STORM WATER MANAGEMENT	11,989.67
609	LIQUOR	120,401.68
612	AIRPORT	9,187.51
614	MEMORIAL AUDITORIUM	1,218.89
702	DATA PROCESSING	4,012.22
703	SAFETY PROMO/LOSS CTRL	1,567.35
705	HEALTH INS PLAN (TPA)	1,373.52
873	GARBAGE COLLECTION	44.46

GRAND TOTAL: 503,347.65
